

EASTWOOD HOMES



GRIER MEADOWS

SITE PROGRESS – WEEK OF DECEMBER 9, 2024

Prepared By: Capital Land Partners

WEEK OF DECEMBER 9 WORK SUMMARY

- Abernethy finished installing the waterline in phase 3. Paving is expected to occur the week of 12/16. Plateau Drive will be extended after phase 3 is paved.
- Abernethy will start the work on Mr. Grier's property after paving in phase 3. The private easement agreement was sent to the Grier's for signatures. Once executed, the sewer tap applications will be submitted to Charlotte.
- Abernethy hammered and removed rock from several pads, as well as from the Duke Energy trench. Duke Energy will return soon to complete phase 4. Spectrum, AT&T, and PNG will install when Duke finishes.
- Pricing was received for the common space landscaping in phase 2. This work will start once the sidewalks are installed.
- Mailbox keys were delivered, and mailbox assignments were received for phases 2-4.



PHASES 2-4 PLAT CHECKLIST



ROADWAY PAVING

Phase 2
Completed

Phase 3
Abernethy finished installing the waterline in phase 3. Paving is expected to occur the week of 12/16.

Phase 4
Completed

UTILITY TESTING

Phase 2
Completed

Phase 3
In progress

Phase 4
Completed

UTILITY AS-BUILTS

Phase	Sewer/Water	Storm
1	Approved	Charlotte provided comments on the video. As-builts need additional labeling and some repairs are needed. Abernethy will address these items.
2	Approved	Charlotte is reviewing the storm pipe video.
3	In progress	In progress
4	Approved	In progress

UTILITY INSTALLATION PROGRESS

SEWER

Completed

- Phase 1
- Phase 2
- Phase 3
- Phase 4



UTILITY INSTALLATION PROGRESS

WATER

Completed

- Phase 1
- Phase 2
- Phase 3
- Phase 4



UTILITY INSTALLATION PROGRESS

STORM

Completed

- Phase 1
- Phase 2
- Phase 3
- Phase 4



UTILITY PROGRESS

FORESTRY
BRINDA D. JONES
DB 1700 PG 218
TAX PARCEL 10816512

**Henry Grier
Alfred Grier**
MARCUS W. GRIER
DB 1779 PG 211
TAX PARCEL 10816511

PRE-CONSTRUCTION MEETING
PRIOR TO ANY LAND
ACTY USING THE ONLINE
TP <http://charlottenc.gov/id/>



LEGEND

	TREE SAVE
	SIDEWALKS
	WETLANDS
	PROPOSED SEW
	DIP INLET
	CATCH BASIN
	REINFORCED CC

UTILITY NOTES:

- CONSTRUCTION AND MATERIALS SHALL BE IN ACCORDANCE WITH CHARLOTTE'S WATER STANDARDS AND SPECIFICATIONS PER WEBSITE AT WWW.CHARLOTTEWATER.ORG.
- DUCTILE IRON PIPE (RED BRASS FOR 2" WATER PIPES) REQUIRED FOR BOTH WATER AND SANITARY SEWER LINES IF THE FOLLOWING CLEARANCES ARE NOT MET:
 a. WWW.CHARLOTTEWATER.ORG

BETTY BYNUM OWENS

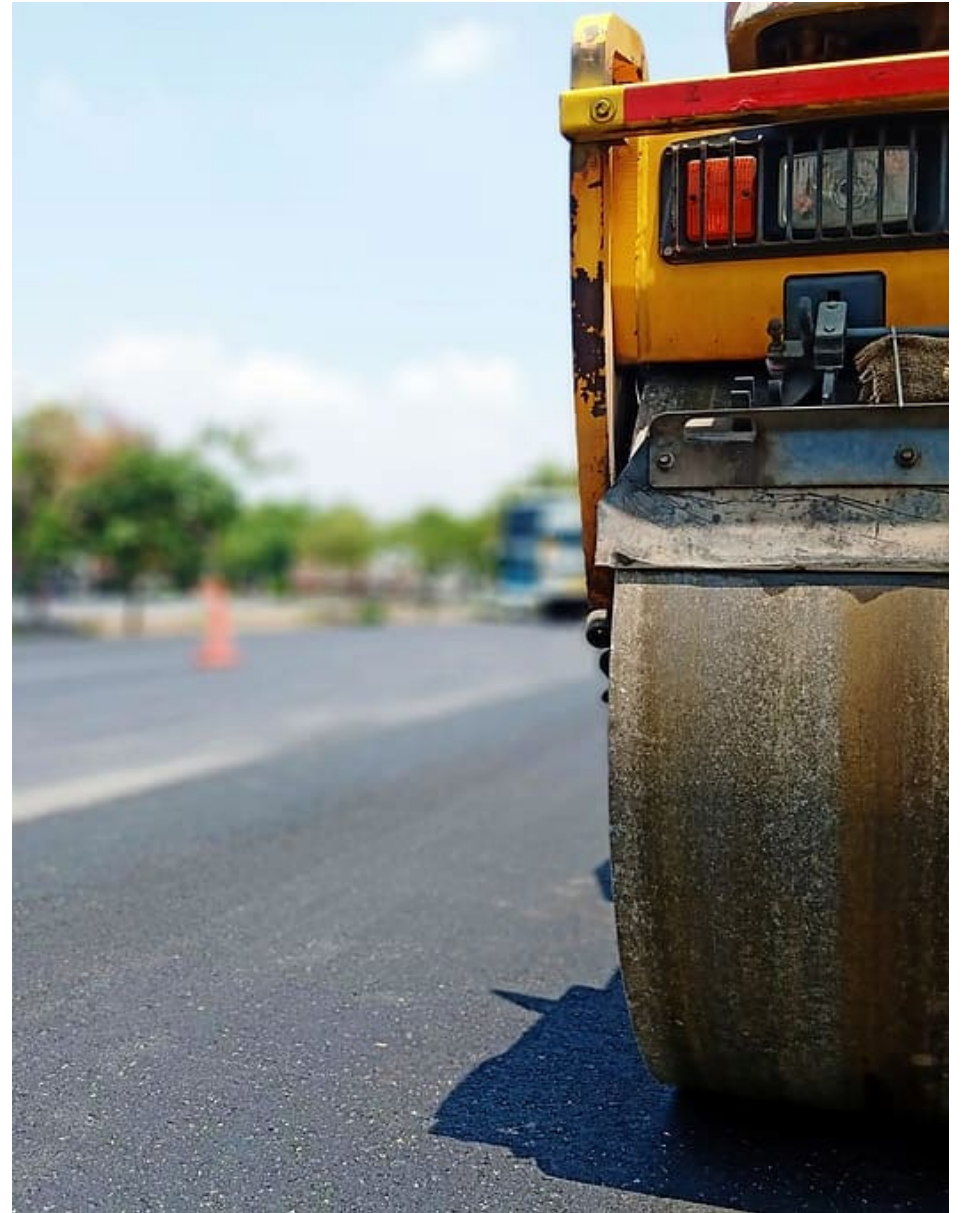
ROADWAY PROGRESS

Phase 1

- **Completed:** Fauna Rd
- **Remaining:** approx. 30' of Plateau Dr

Phases 2-4

- **Completed:** Phase 2 and 4
- **Remaining:** Phases 2-4 final lift. Paving in phase 3.
 - Abernethy finished installing the waterline in phase 3. Paving is expected to occur the week of 12/16.



DRY UTILITY PROGRESS

DUKE ENERGY

Phase 1
Complete

Phase 2
Complete

Phase 3
The design is complete. A pre-con will be held once the road is paved.

Phase 4
Duke is currently installing in phase 4.

SPECTRUM

Phase 1
Complete

Phase 2
Complete

Phase 3
The design is complete. A pre-con will be held once the road is paved.

Phase 4
Spectrum will begin their work once Duke finishes.

AT&T

Phase 1
Complete

Phase 2
Complete

Phase 3
The design is complete. A pre-con will be held once the road is paved.

Phase 4
AT&T will begin their work once Duke finishes.

PNG

Phase 1
Complete

Phase 2
Complete

Phase 3
The design is complete. A pre-con will be held once the road is paved.

Phase 4
PNG will begin their work once Duke finishes.

