

EASTWOOD HOMES

GRIER MEADOWS

SITE PROGRESS – WEEK OF DECEMBER 30, 2024

Prepared By: Capital Land Partners

WEEK OF DECEMBER 30 WORK SUMMARY

- Abernethy returned to work on 1/2. They paved phase 3 and completed the extension of Plateau Drive in phase 1. Sidewalk in phase 2 is scheduled to be installed the week of 1/6. They will also repair the damaged curb. Common space landscaping will be completed after the sidewalk is installed. They will start the work on Mr. Grier's property in the next couple of weeks. The private easement agreement was executed and will be recorded the week of 1/6. Once recorded, the sewer tap applications will be submitted to Charlotte.
- Abernethy will be hammering the rock in lot 46 the week of 1/6 once weather permits, as well as new rock encountered in the Duke Energy trench at lots 72 and 73. Duke Energy will return to complete phase 4 once the rock is removed. Spectrum and AT&T will install when Duke finishes.
- Lot lines were painted on the curb in phase 3. We have requested a pre-con for dry utilities in phase 3.
- The erosion control inspector gave us approval to close BMP 4 in phase 1. This work will be priced out and scheduled soon.



PHASES 2-4 PLAT CHECKLIST



ROADWAY PAVING

Phase 2
Completed

Phase 3
Completed

Phase 4
Completed

UTILITY TESTING

Phase 2
Completed

Phase 3
In progress

Phase 4
Completed

UTILITY AS-BUILTS

Phase	Sewer/Water	Storm
1	Approved	As-builts need additional labeling and some repairs are needed. Abernethy will address these items.
2	Approved	Charlotte is reviewing the storm pipe video.
3	In progress	In progress
4	Approved	Under review. Comments are due by 1/21.

UTILITY INSTALLATION PROGRESS

SEWER

Completed

- Phase 1
- Phase 2
- Phase 3
- Phase 4



UTILITY INSTALLATION PROGRESS

WATER

Completed

- Phase 1
- Phase 2
- Phase 3
- Phase 4



UTILITY INSTALLATION PROGRESS

STORM

Completed

- Phase 1
- Phase 2
- Phase 3
- Phase 4



UTILITY PROGRESS

FORESTRY
BRINDA D. JONES
DB 1790 PG 218
TAX PARCEL 10816512

**Henry Grier
Alfred Grier**
MARCUS W. WATTS
DB 1779 PG 211
TAX PARCEL 10816511

PRE-CONSTRUCTION MEETING
PRIOR TO ANY LAND
ACTY USING THE ONLINE
TP <http://charlottenc.gov/id/>



GRIER RETH
DB 11201

POST CONSTRUCTION
CONTROLS EASEMENT (TYP.)
LLOYD J MOON
DB 4507 PG 491
TAX PARCEL 10811205

JAMES DAVID GRIER
DB 2567 PG 642
TAX PARCEL 10811206

JAMES D GRIER
INEZ M GRIER
DB 2342 PG 430
TAX PARCEL 10811207

THOMAS B BYNUM
KATE W BYNUM
DB 4246 PG 58
TAX PARCEL 10811223

BETTY BYNUM OWERS

JOHN F ALL
CHARLES A
DB 8223 PG 4
TAX PARCEL 10816510

ROBERT RENOLDS
LEONICE C RENOLD
DB 8776 PG 876
TAX PARCEL 10816509

JOHNNIE JR JONES
GAIL JONES
DB 8780 PG 880
TAX PARCEL 10816508

BILL W HAWES
DB 8748 PG 848
TAX PARCEL 10816507

PROGRESS BROTHERS
BOBROWER L
DB 30049 PG 1
TAX PARCEL 10816506

DAVID GURBAUD
LISA GURBAUD
DB 8747 PG 847
TAX PARCEL 10816505

CAMILLE MARTIN
JAMES MARTIN
DB 8746 PG 846
TAX PARCEL 10816504

JOE LEE
FRANCISCO AIL CAPO
DB 25255 PG
TAX PARCEL 10816503

KEVIN CHANE
PARRISH WAHLEN
DB 28290 PG 779
TAX PARCEL 10816502

WILLIAM CUEVAS
LESHIA CUEVAS
DB 8744 PG 811
TAX PARCEL 10816501

JOHN T ALEXANDRE
DEBBIE A ALEXANDRE
DB 8847 PG 858
TAX PARCEL 10816500

IRIS ANN BUSCHAKES
DB 2520 PG 995
TAX PARCEL 10816499

PRISCILLA DANES
DB 18862 PG 929
TAX PARCEL 10816498

GRADY B BOWENS
BROWNWIN THERESP
DB 8558 PG 386
TAX PARCEL 10816497

MARITHA C SUDAN-CL
DB 8559 PG 387
TAX PARCEL 10816496

GLADY HUBNE
DB 8915 PG 878
TAX PARCEL 10816495

ADELA B LEVI
DB 31118 PG 423
TAX PARCEL 10816524

UTILITY NOTES:

- CONSTRUCTION AND MATERIALS SHALL BE IN ACCORDANCE WITH CHARLOTTE'S WATER STANDARDS AND SPECIFICATIONS PER WEBSITE AT WWW.CHARLOTTEWATER.ORG.
- DUCTILE IRON PIPE (RED BRASS FOR 2" WATER PIPES) REQUIRED FOR BOTH WATER AND SANITARY SEWER LINES IF THE FOLLOWING CLEARANCES ARE NOT MET:
 - 1. UNDER OVERHEAD POWER LINES
 - 2. UNDER POWER LINES
 - 3. UNDER RAILROADS
 - 4. UNDER STRUCTURES
 - 5. UNDER DRIVEWAYS
 - 6. UNDER DRIVEWAYS
 - 7. UNDER DRIVEWAYS
 - 8. UNDER DRIVEWAYS
 - 9. UNDER DRIVEWAYS
 - 10. UNDER DRIVEWAYS
 - 11. UNDER DRIVEWAYS

LEGEND

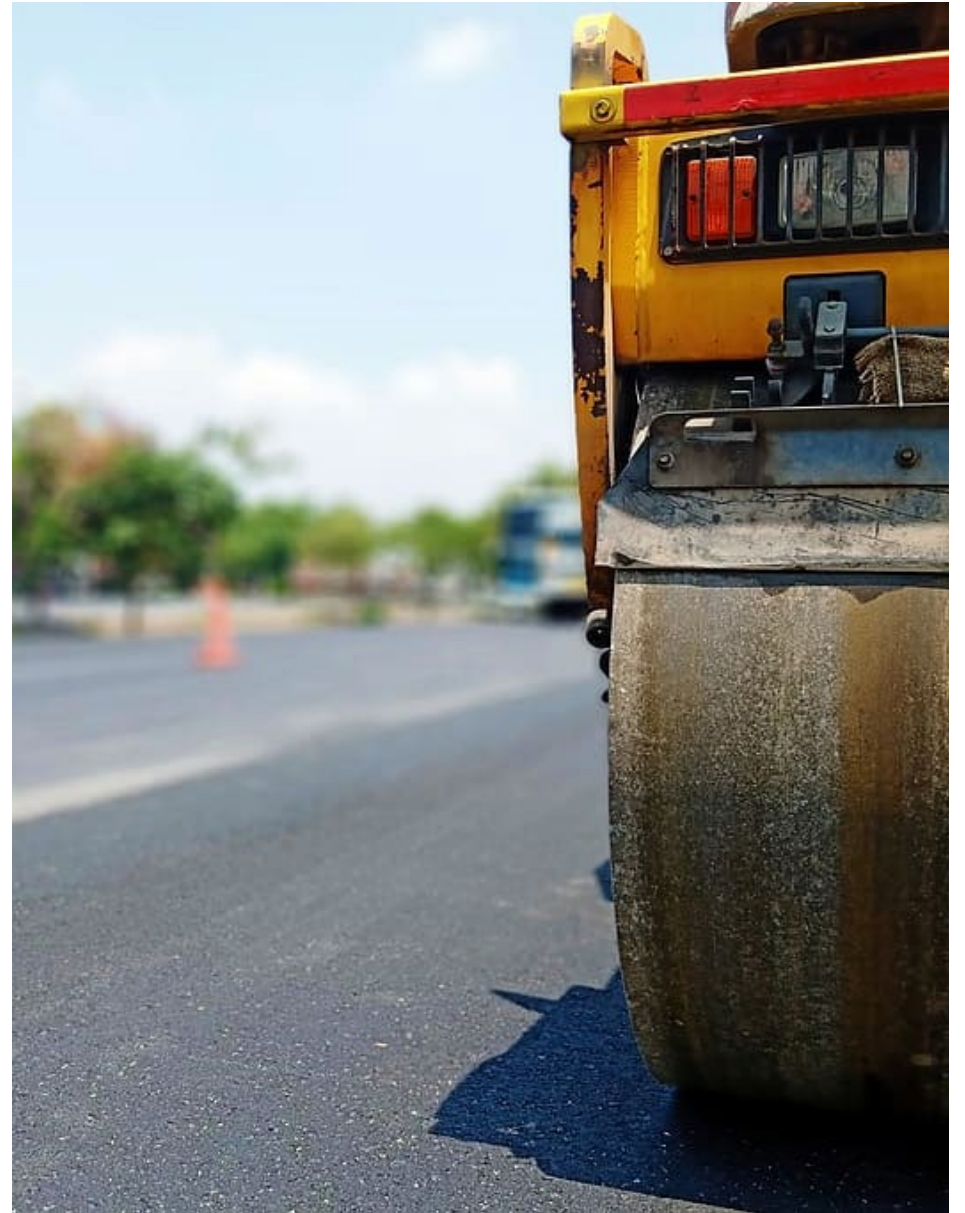
- TREE SAVE
- SIDEWALKS
- WETLANDS
- PROPOSED SEW
- DI
- CS
- RCP
- DROP INLET
- CATCH BASIN
- REINFORCED CC

ROADWAY PROGRESS

Completed:

- Phase 1
- Phase 2
- Phase 3
- Phase 4

Remaining: Final Lifts



DRY UTILITY PROGRESS

DUKE ENERGY

Phase 1
Complete

Phase 2
Complete

Phase 3
The design is complete. We have requested a pre-con meeting.

Phase 4
Duke is currently installing in phase 4.

SPECTRUM

Phase 1
Complete

Phase 2
Complete

Phase 3
The design is complete. We have requested a pre-con meeting.

Phase 4
Spectrum will begin their work once Duke finishes.

AT&T

Phase 1
Complete

Phase 2
Complete

Phase 3
The design is complete. We have requested a pre-con meeting.

Phase 4
AT&T will begin their work once Duke finishes.

PNG

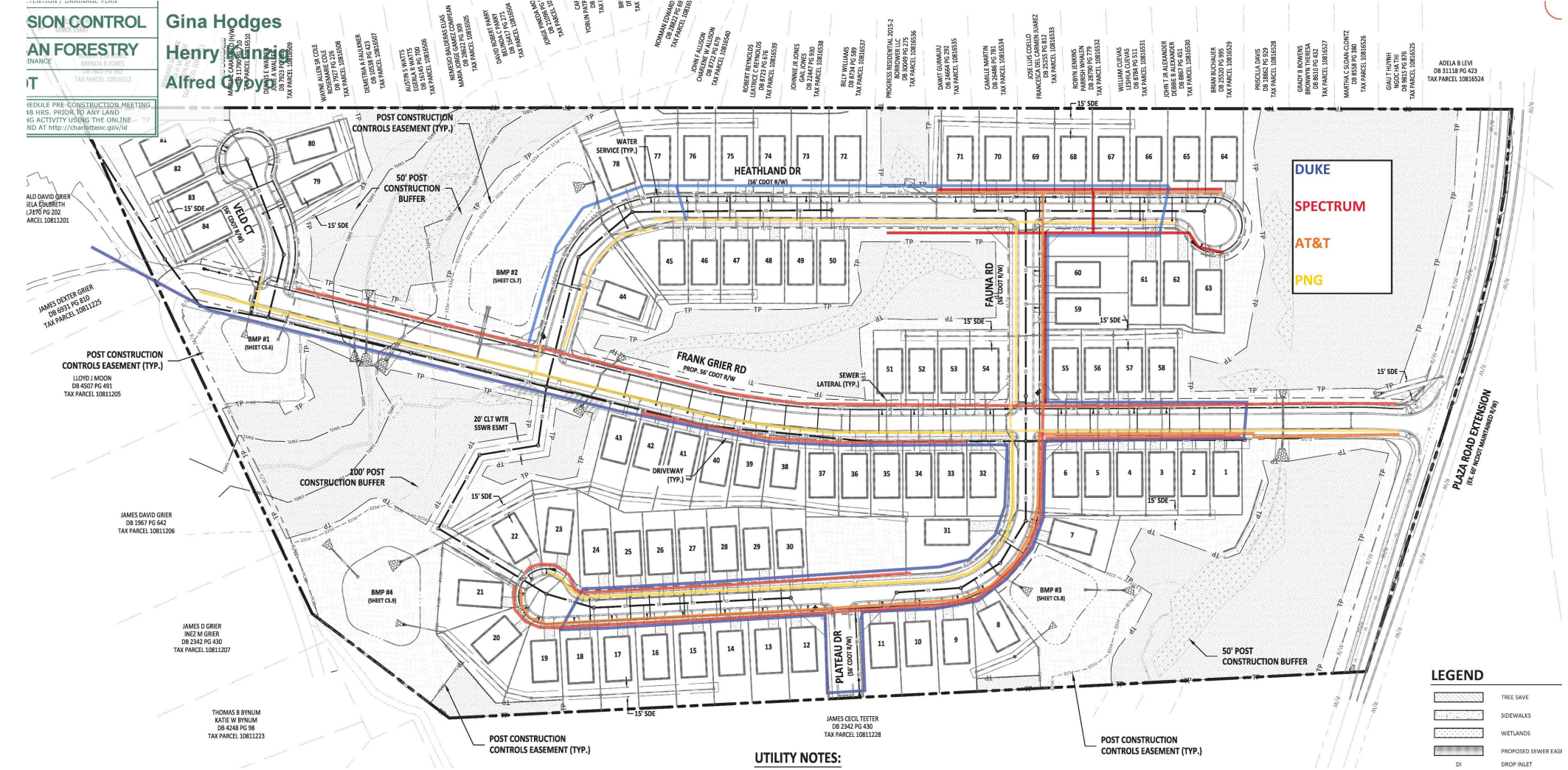
Phase 1
Complete

Phase 2
Complete

Phase 3
The design is complete. We have requested a pre-con meeting.

Phase 4
Complete

DRY UTILITY PROGRESS



CONSTRUCTION CONTROL
 PERMITS: FORESTRY, AN FORESTRY
 TAX PARCEL 10815552

Gina Hodges
 Henry King
 Alfred Q. Grier

ALD DAVID GRIER
 JELA COBRETH
 12715 PG 202
 TAX PARCEL 10811201

JAMES DEXTER GRIER
 DB 6521 PG 816
 TAX PARCEL 10811225

POST CONSTRUCTION
 CONTROLS EASEMENT (TYP.)
 LLOYD J MOON
 DB 4507 PG 491
 TAX PARCEL 10811205

JAMES DAVID GRIER
 DB 1967 PG 642
 TAX PARCEL 10811206

JAMES D GRIER
 INEZ M GRIER
 DB 2342 PG 430
 TAX PARCEL 10811207

THOMAS B BYNUM
 KATIE W BYNUM
 DB 4248 PG 98
 TAX PARCEL 10811223

UTILITY NOTES:

POST CONSTRUCTION
 CONTROLS EASEMENT (TYP.)

ADALEA B LEVI
 DB 1113 PG 423
 TAX PARCEL 10816524