

EASTWOOD HOMES



# **GRIER MEADOWS**

**SITE PROGRESS – WEEK OF DECEMBER 2, 2024**

Prepared By: Capital Land Partners

# WEEK OF DECEMBER 2 WORK SUMMARY

---

- Abernethy put down stone in phase 3 and are continuing to install the waterline. They also completed install of the remaining storm. Paving will occur once the weather permits. Plateau Drive will be extended after phase 3 is paved.
- Abernethy will start the work on Mr. Grier's property after paving in phase 3. The private easement agreement was reviewed and revised by the attorney and will be sent for signatures the week of 12/9. Once executed, the sewer tap applications will be submitted to Charlotte.
- Duke Energy hit rock in phase 4 and will continue installing their infrastructure cable once rock is hammered and a conduit crossing is located. Abernethy will complete this work once weather permits. Spectrum, AT&T, and PNG will install when Duke finishes.



# PHASES 2-4 PLAT CHECKLIST



## ROADWAY PAVING

**Phase 2**  
Completed

**Phase 3**  
Abernethy put down stone in phase 3 and are continuing to work on installation of the waterline. Paving will occur once the weather permits.

**Phase 4**  
Completed

## UTILITY TESTING

**Phase 2**  
Completed

**Phase 3**  
In progress

**Phase 4**  
Completed

## UTILITY AS-BUILTS

Phase	Sewer/Water	Storm
1	Approved	Charlotte provided comments on the video. As-builts need additional labeling and some repairs are needed. Abernethy will address these items.
2	Approved	Charlotte is reviewing the storm pipe video.
3	In progress	In progress
4	Approved	In progress

# UTILITY INSTALLATION PROGRESS

## SEWER

---

### Completed

- Phase 1
- Phase 2
- Phase 3
- Phase 4



# UTILITY INSTALLATION PROGRESS

## WATER

---

### Completed

- Phase 1
- Phase 2
- Phase 4

### Remaining

- Phase 3



# UTILITY INSTALLATION PROGRESS

## STORM

---

### Completed

- Phase 1
- Phase 2
- Phase 3
- Phase 4



# UTILITY PROGRESS

**FORESTRY**  
BRINDA D. JONES  
DB 1790 PG 258  
TAX PARCEL 10816512

**Henry Grier  
Alfred Grier**  
MARCUS W. WATTS  
DB 1779 PG 251  
TAX PARCEL 10816511

PRE-CONSTRUCTION MEETING  
PRIOR TO ANY LAND  
ACTIVITY USING THE ONLINE  
APP: <http://charlottenc.gov/id/>

GRIER RETH  
302  
11201

S DEATER GRIER  
8 6931 PG 610  
TAX PARCEL 10811225

POST CONSTRUCTION  
CONTROLS EASEMENT (TYP.)  
LLOYD J MOON  
DB 4507 PG 491  
TAX PARCEL 10811205

JAMES DAVID GRIER  
DB 2567 PG 642  
TAX PARCEL 10811206

JAMES D GRIER  
INEZ M GRIER  
DB 2342 PG 430  
TAX PARCEL 10811207

THOMAS B BYNUM  
KATE W BYNUM  
DB 4246 PG 58  
TAX PARCEL 10811223

BETTY BYNUM OWENS

WAYNE ALLEN SEALE  
ROSEMARY PG 225  
TAX PARCEL 10816508

DEMETRIA M. ALKALAK  
DB 1790 PG 251  
TAX PARCEL 10816511

ALVIN W. WATTS  
AGUIA R. WATTS  
DB 1790 PG 251  
TAX PARCEL 10816511

WILSON S. BALU  
TAMARA DORGE EP  
DB 1790 PG 251  
TAX PARCEL 10816511

DAVID F  
BELL  
DB  
TAX PARCEL 10816511

JOHN F. ALL  
CHARLES A. A  
DB 8223 PG 4  
TAX PARCEL 10816511

ROBERT RENOLDS  
LEONICE C. RENOLD  
DB 8776 PG 6  
TAX PARCEL 10816511

JOHNNIE JR. JONES  
GAIL JONES  
DB 8776 PG 6  
TAX PARCEL 10816511

BILL W. WATTS  
DB 8748 PG 5  
TAX PARCEL 10816511

PROGRESS BROTHERS  
BOBROWER L  
DB 30049 PG 1  
TAX PARCEL 10816511

DAVID GURBAUD  
TAX PARCEL 10816515

CAMILLE MARTIN  
TAX PARCEL 10816515

FRANCISCO S. DEL CARMEN  
DB 2525 PG  
TAX PARCEL 10816515

FRANK THOMAS  
PARRISH WAHLEN  
DB 28290 PG 779  
TAX PARCEL 10816515

WILLIAM C. BOWENS  
LESLIE A. CUEVAS  
DB 8784 PG 511  
TAX PARCEL 10816515

JOHN T. P. ALEXANDER  
DEBBIE B. ALEXANDER  
DB 8847 PG 455  
TAX PARCEL 10816515

BRANDY BOWENS  
DB 18862 PG 929  
TAX PARCEL 10816515

PRISCILLA DANES  
DB 18862 PG 929  
TAX PARCEL 10816515

GRADY B. BOWENS  
BROWNWIN THERESA  
DB 8558 PG 386  
TAX PARCEL 10816515

MARITHA C. SUDAN-CL  
DB 8558 PG 386  
TAX PARCEL 10816515

GLADY H. HUNN  
DB 8558 PG 386  
TAX PARCEL 10816515

ADELA B. LEVI  
DB 31118 PG 423  
TAX PARCEL 10816524



**UTILITY NOTES:**

- CONSTRUCTION AND MATERIALS SHALL BE IN ACCORDANCE WITH CHARLOTTE'S WATER STANDARDS AND SPECIFICATIONS PER WEBSITE AT [WWW.CHARLOTTETWATER.ORG](http://WWW.CHARLOTTETWATER.ORG).
- DUCTILE IRON PIPE (RED BRASS FOR 2" WATER PIPES) REQUIRED FOR BOTH WATER AND SANITARY SEWER LINES IF THE FOLLOWING CLEARANCES ARE NOT MET:
  - 1.5' MIN. CLEARANCE TO EXISTING UTILITIES
  - 1.5' MIN. CLEARANCE TO EXISTING FOUNDATIONS
  - 1.5' MIN. CLEARANCE TO EXISTING FOUNDATIONS

**LEGEND**

- TREE SAVE
- SIDEWALKS
- WETLANDS
- PROPOSED SEW
- DROP-INLET
- CATCH BASIN
- REINFORCED CC

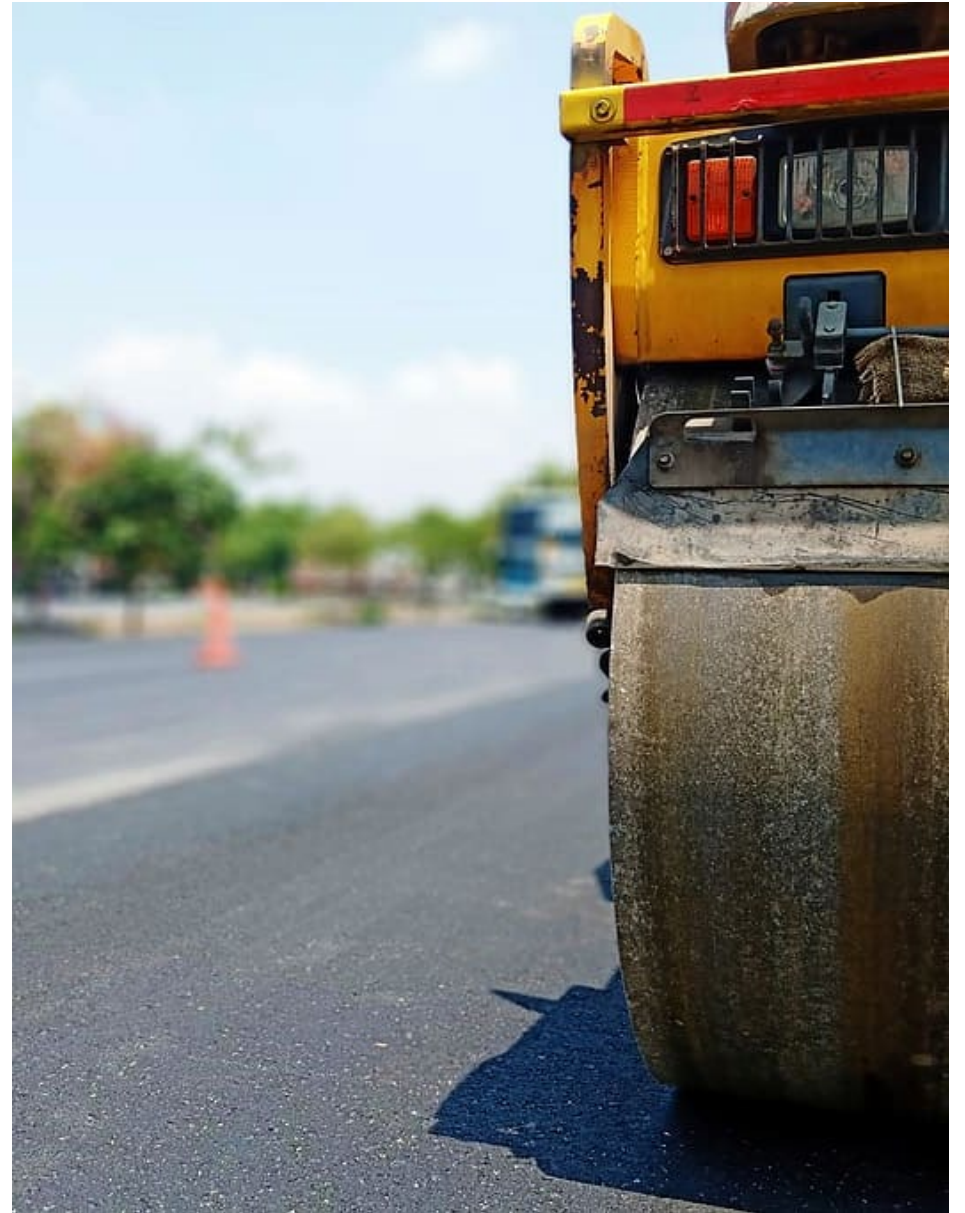
# ROADWAY PROGRESS

## Phase 1

- **Completed:** Fauna Rd
- **Remaining:** approx. 30' of Plateau Dr

## Phases 2-4

- **Completed:** Phase 2 and 4
- **Remaining:** Phases 2-4 final lift. Paving in phase 3.
  - Abernethy put down stone in phase 3 and are continuing to work on installation of the waterline. Paving will occur once the weather permits.



# DRY UTILITY PROGRESS

## DUKE ENERGY

---

**Phase 1**  
Complete

**Phase 2**  
Complete

**Phase 3**  
The design is complete. A pre-con will be held once the road is paved.

**Phase 4**  
Duke is currently installing in phase 4.

## SPECTRUM

---

**Phase 1**  
Complete

**Phase 2**  
Complete

**Phase 3**  
The design is complete. A pre-con will be held once the road is paved.

**Phase 4**  
Spectrum will begin their work once Duke finishes.

## AT&T

---

**Phase 1**  
Complete

**Phase 2**  
Complete

**Phase 3**  
The design is complete. A pre-con will be held once the road is paved.

**Phase 4**  
AT&T will begin their work once Duke finishes.

## PNG

---

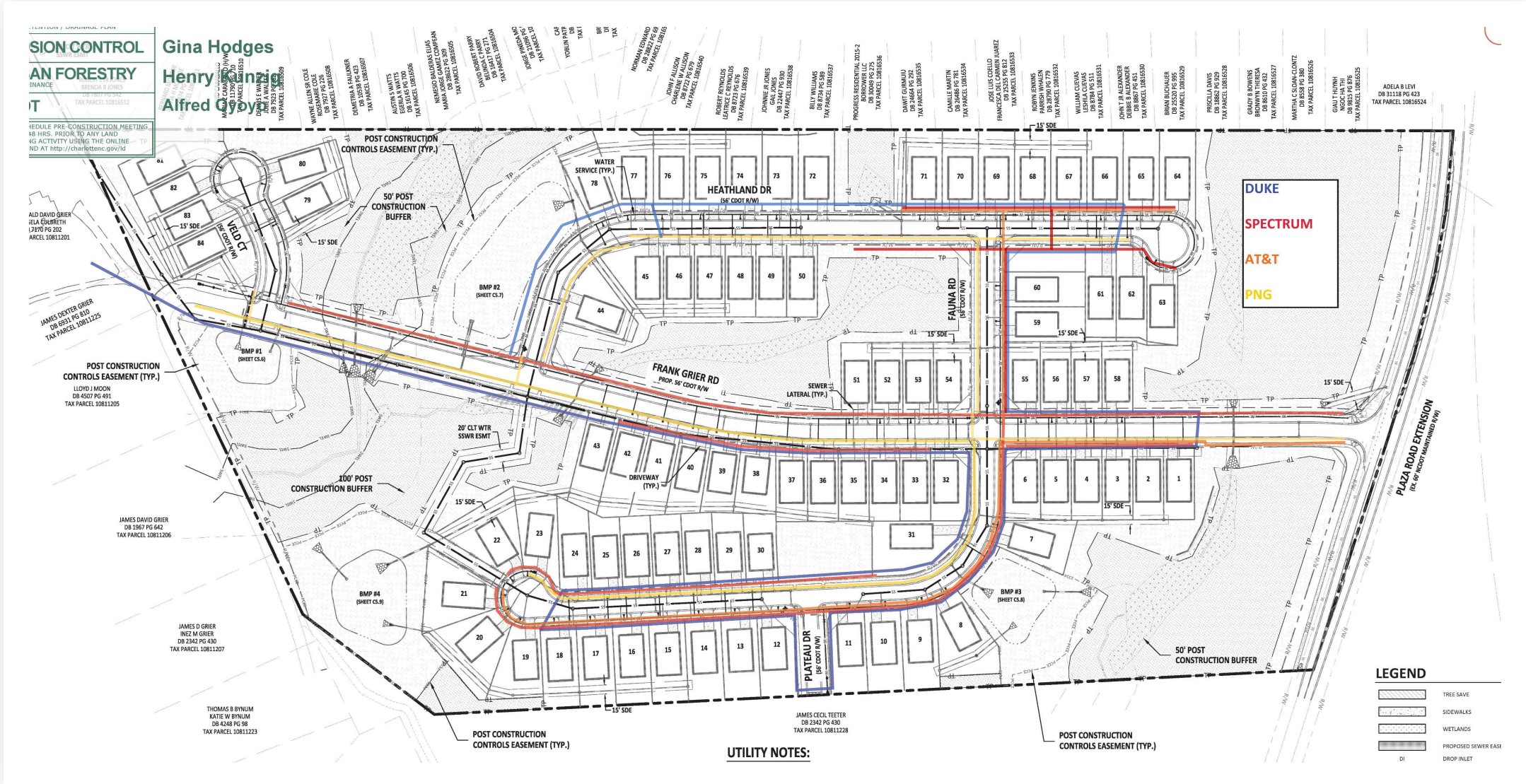
**Phase 1**  
Complete

**Phase 2**  
Complete

**Phase 3**  
The design is complete. A pre-con will be held once the road is paved.

**Phase 4**  
PNG will begin their work once Duke finishes.

# DRY UTILITY PROGRESS



**CONSTRUCTION CONTROL**  
**AN FORESTRY**  
**IT**

**Gina Hodges**  
**Henry K...**  
**Alfred G...**

WYNNE ALLEN SLOAN DB 6521 PG 816 TAX PARCEL 10811205  
 ROSAMOND C. SLOAN DB 10145 PG 506 TAX PARCEL 10811206  
 CONNOR R. PALMER DB 7922 PG 823 TAX PARCEL 10811207  
 ADRIAN W. WATTS DB 10145 PG 506 TAX PARCEL 10811208  
 NANCY S. BALLEW DB 10145 PG 506 TAX PARCEL 10811209  
 MARIA LORGE PG 300 TAX PARCEL 10811210  
 DAVID ROBERT LASKY DB 2342 PG 430 TAX PARCEL 10811211  
 BRADLEY T. LASKY DB 2342 PG 430 TAX PARCEL 10811212  
 JORGE ANDRADO DB 2342 PG 430 TAX PARCEL 10811213  
 CAROL ANN YOUNG DB 2342 PG 430 TAX PARCEL 10811214  
 YOUNG PAT TAX PARCEL 10811215  
 CAROL ANN YOUNG DB 2342 PG 430 TAX PARCEL 10811216  
 MONIKA OSWALD DB 2342 PG 430 TAX PARCEL 10811217  
 DONALD F. ALLEN DB 2342 PG 430 TAX PARCEL 10811218  
 COLLEEN W. ALLEN DB 2342 PG 430 TAX PARCEL 10811219  
 ROBERT PERINOS LEATRICE C. PERINOS DB 2342 PG 430 TAX PARCEL 10811220  
 JONNIE B. WATTS DB 2342 PG 430 TAX PARCEL 10811221  
 GAIL JONES DB 2342 PG 430 TAX PARCEL 10811222  
 BRUCE WILLIAMS DB 2342 PG 430 TAX PARCEL 10811223  
 PROGRESS RESIDENTIAL 2015-2 DB 2342 PG 430 TAX PARCEL 10811224  
 DAVITT GUNAWAN DB 2342 PG 430 TAX PARCEL 10811225  
 CAMILLE MARYN DB 2342 PG 430 TAX PARCEL 10811226  
 JOSE LUKE COLLADO DB 2342 PG 430 TAX PARCEL 10811227  
 FRANCISCA DEL CARMEN JIMENEZ DB 2342 PG 430 TAX PARCEL 10811228  
 ROSBY JENNINS DB 2342 PG 430 TAX PARCEL 10811229  
 FARRISH WYALIN DB 2342 PG 430 TAX PARCEL 10811230  
 WILLIAM CUEVAS LESLIE A. CUEVAS DB 2342 PG 430 TAX PARCEL 10811231  
 JOHN L. ALEXANDER DB 2342 PG 430 TAX PARCEL 10811232  
 BRIAN RICHAUER DB 2342 PG 430 TAX PARCEL 10811233  
 PRESULLA DAVIS DB 2342 PG 430 TAX PARCEL 10811234  
 GRADY B. BOWENS DB 2342 PG 430 TAX PARCEL 10811235  
 MARTHA C. SLOAN-CLOWTZ DB 2342 PG 430 TAX PARCEL 10811236  
 GAULT THOMAS DB 2342 PG 430 TAX PARCEL 10811237  
 ADELA B. LEVI DB 2342 PG 430 TAX PARCEL 10811238

ALD DAVID GRIER JELA COBRETH 12175 PG 202 TAX PARCEL 10811201

JAMES DEXTER GRIER DB 6521 PG 816 TAX PARCEL 10811225

POST CONSTRUCTION CONTROLS EASEMENT (TYP.)  
 LLOYD J. MOON DB 4507 PG 491 TAX PARCEL 10811205

JAMES DAVID GRIER DB 1367 PG 642 TAX PARCEL 10811206

JAMES D. GRIER INEZ M. GRIER DB 2342 PG 430 TAX PARCEL 10811207

THOMAS B. BYNUM KATIE W. BYNUM DB 4248 PG 58 TAX PARCEL 10811223

JAMES CECIL TEETER DB 2342 PG 430 TAX PARCEL 10811228

POST CONSTRUCTION CONTROLS EASEMENT (TYP.)