

EASTWOOD HOMES



# **GRIER MEADOWS**

**SITE PROGRESS – WEEK OF NOVEMBER 25, 2024**

Prepared By: Capital Land Partners

# WEEK OF NOVEMBER 25 WORK SUMMARY

---

- Curb was poured in phase 3. Abernethy will be installing the waterline the week of 12/2. Stone will go down afterward, and we expect paving to occur the following week. Plateau Drive will be extended after phase 3 is paved.
- Abernethy will start the work on Mr. Grier's property within the next week. The private easement agreement will be sent for signatures the week of 12/2, and once executed, will be submitted to Charlotte for the sewer taps.
- Duke Energy continued installing their infrastructure cable in phase 4. Spectrum, AT&T, and PNG will install once Duke finishes.



# PHASES 2-4 PLAT CHECKLIST



## ROADWAY PAVING

**Phase 2**  
Completed

**Phase 3**  
Curb was poured in phase 3. Abernethy will be installing the waterline the week of 12/2. Stone will go down afterward, and we expect paving to occur the following week.

**Phase 4**  
Completed

## UTILITY TESTING

**Phase 2**  
Completed

**Phase 3**  
In progress

**Phase 4**  
Completed

## UTILITY AS-BUILTS

Phase	Sewer/Water	Storm
1	Approved	Charlotte is reviewing the storm pipe video.
2	Approved	Charlotte is reviewing the storm pipe video.
3	In progress	In progress
4	Approved	In progress

# UTILITY INSTALLATION PROGRESS

## SEWER

---

### Completed

- Phase 1
- Phase 2
- Phase 3
- Phase 4



# UTILITY INSTALLATION PROGRESS

## WATER

---

### Completed

- Phase 1
- Phase 2
- Phase 4

### Remaining

- Phase 3



# UTILITY INSTALLATION PROGRESS

## STORM

---

### Completed

- Phase 1
- Phase 2
- Phase 3: B5-CB to B2-DI
- Phase 4

### Remaining

- Phase 3: B2-DI to B1-DI

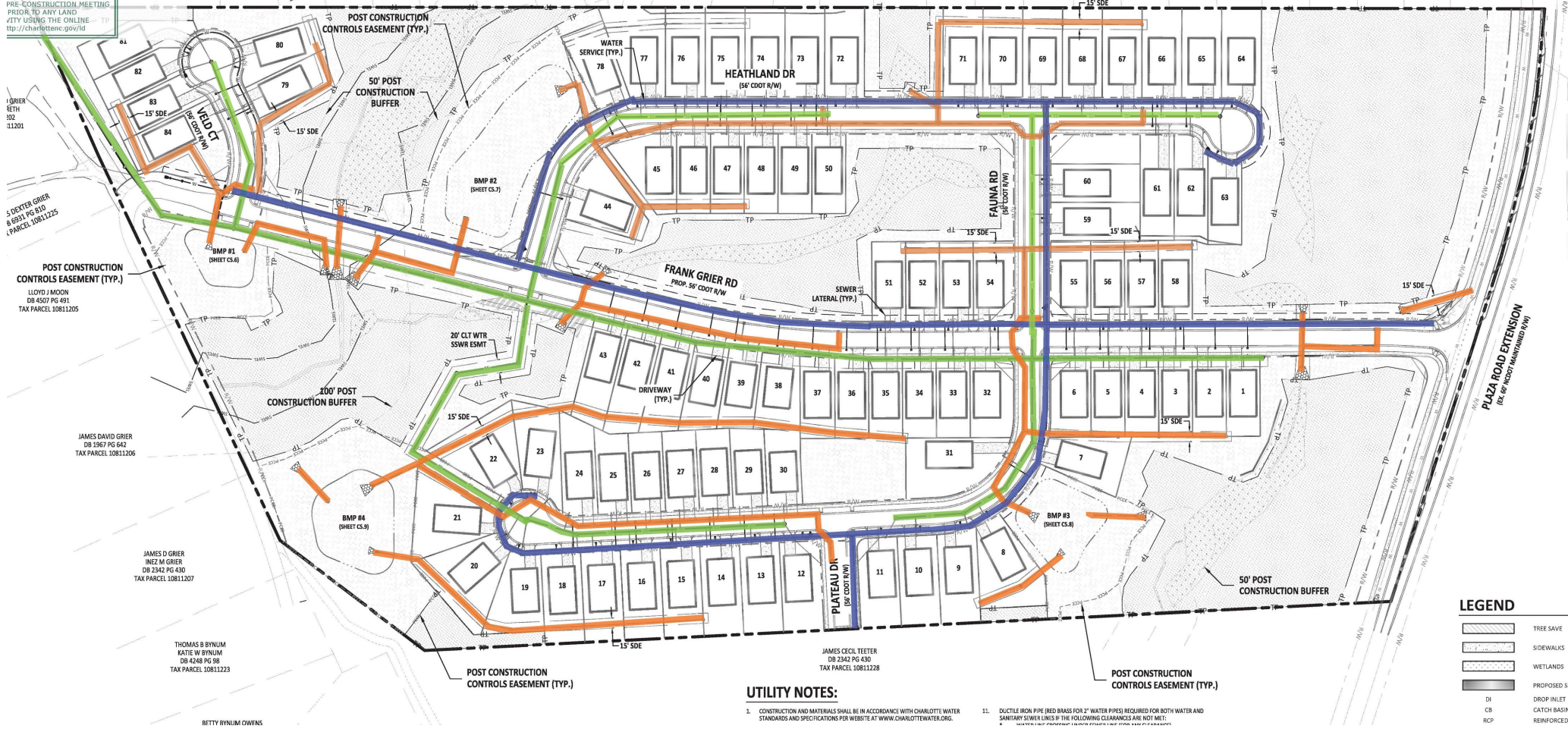


# UTILITY PROGRESS

**FORESTRY**  
BRINDA D. JONES  
DB 1790 PG 256  
TAX PARCEL 10816512

**Henry Grier  
Alfred Grier**  
MARCUS W. WATTS  
DB 1779 PG 256  
TAX PARCEL 10816512

PRE-CONSTRUCTION MEETING  
PRIOR TO ANY LAND  
ACTIVITY USING THE ONLINE  
APP: <http://charlottenc.gov/id/>



GRIER RETH  
DB 11201

S DEATER GRIER  
DB 6931 PG 610  
TAX PARCEL 10811225

POST CONSTRUCTION  
CONTROLS EASEMENT (TYP.)  
LLOYD J MOON  
DB 4507 PG 491  
TAX PARCEL 10811205

JAMES DAVID GRIER  
DB 2567 PG 642  
TAX PARCEL 10811206

JAMES D GRIER  
INEZ M GRIER  
DB 2342 PG 430  
TAX PARCEL 10811207

THOMAS B BYNUM  
KATE W BYNUM  
DB 4246 PG 58  
TAX PARCEL 10811223

BETTY BYNUM OWERS

JOHN F ALL  
CHARLES A  
DB 8223 PG 4  
TAX PARCEL 10816512

ROBERT RENOLDS  
LENNICE C RENOLD  
DB 8776 PG 6  
TAX PARCEL 10816512

JOHNIE JR OWENS  
GAIL JONES  
DB 8780 PG 380  
TAX PARCEL 10816512

BILL WYMONS  
DB 8748 PG 54  
TAX PARCEL 10816512

PROGRESS RESIDEN  
BOBROWER L  
DB 30049 PG 1  
TAX PARCEL 10816512

DAVID GURBAUD  
DB 8748 PG 54  
TAX PARCEL 10816512

CAMILLE MARTIN  
DB 8748 PG 54  
TAX PARCEL 10816512

FRANCISCO SAIL CAP  
DB 25255 PG  
TAX PARCEL 10816512

FRANK THOMAS  
PARRISH WAHLEN  
DB 28290 PG 779  
TAX PARCEL 10816512

WILLIAM CUEVAS  
LESHIA CUEVAS  
DB 8784 PG 511  
TAX PARCEL 10816512

JOHN T ALEXANDER  
DEBBIE A ALEXANDER  
DB 8847 PG 450  
TAX PARCEL 10816512

BRANDY BOWENS  
DB 2520 PG 995  
TAX PARCEL 10816512

PRISCILLA DANES  
DB 18862 PG 929  
TAX PARCEL 10816512

GRADY B BOWENS  
BROWN W THERSP  
DB 8558 PG 386  
TAX PARCEL 10816512

MARITHA C SUDAN-CL  
DB 8558 PG 386  
TAX PARCEL 10816512

GLADY HUBBIE  
DB 8915 PG 876  
TAX PARCEL 10816512

ADELA B LEVI  
DB 31118 PG 423  
TAX PARCEL 10816524

**UTILITY NOTES:**

- CONSTRUCTION AND MATERIALS SHALL BE IN ACCORDANCE WITH CHARLOTTE'S WATER STANDARDS AND SPECIFICATIONS PER WEBSITE AT [WWW.CHARLOTTEWATER.ORG](http://WWW.CHARLOTTEWATER.ORG).
- DUCTILE IRON PIPE (RED BRASS FOR 2" WATER PIPES) REQUIRED FOR BOTH WATER AND SANITARY SEWER LINES IF THE FOLLOWING CLEARANCES ARE NOT MET:
  - 1.5' TO EXISTING UTILITIES
  - 1.5' TO EXISTING FOUNDATIONS
  - 1.5' TO EXISTING FOUNDATIONS

**LEGEND**

- TREE SAVE
- SIDEWALKS
- WETLANDS
- PROPOSED SEW
- DROP-INLET
- CATCH BASIN
- REINFORCED CC

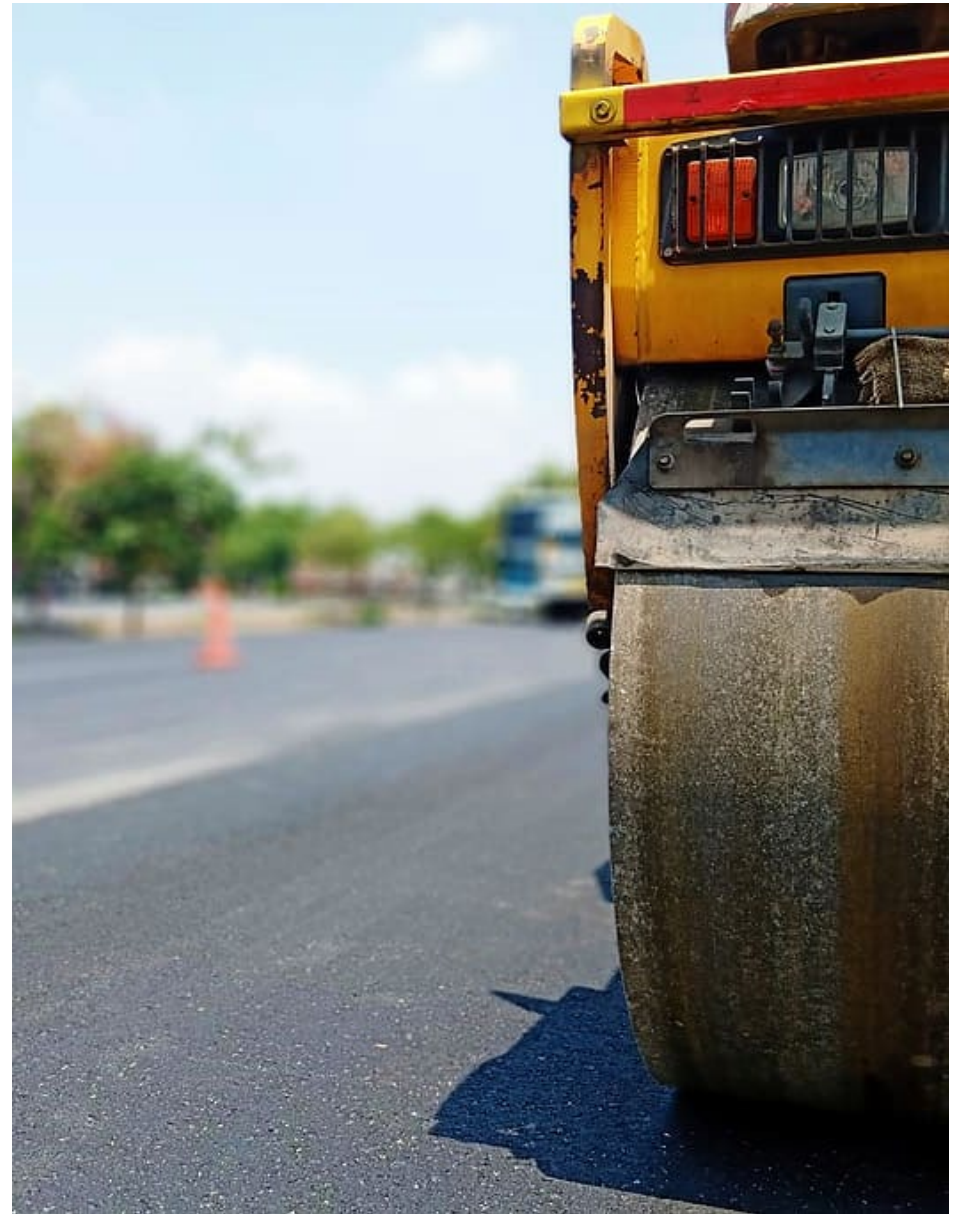
# ROADWAY PROGRESS

## Phase 1

- **Completed:** Fauna Rd
- **Remaining:** approx. 30' of Plateau Dr

## Phases 2-4

- **Completed:** Phase 2 and 4
- **Remaining:** Phases 2-4 final lift. Paving in phase 3.
  - Curb was poured in phase 3. Abernethy will be installing the waterline the week of 12/2. Stone will go down afterward, and we expect paving to occur the following week.



# DRY UTILITY PROGRESS

## DUKE ENERGY

---

**Phase 1**  
Complete

**Phase 2**  
Complete

**Phase 3**  
The design is complete. A pre-con will be held once the road is paved.

**Phase 4**  
Duke is currently installing in phase 4.

## SPECTRUM

---

**Phase 1**  
Complete

**Phase 2**  
Complete

**Phase 3**  
The design is complete. A pre-con will be held once the road is paved.

**Phase 4**  
Spectrum will begin their work once Duke finishes.

## AT&T

---

**Phase 1**  
Complete

**Phase 2**  
Complete

**Phase 3**  
The design is complete. A pre-con will be held once the road is paved.

**Phase 4**  
AT&T will begin their work once Duke finishes.

## PNG

---

**Phase 1**  
Complete

**Phase 2**  
Complete

**Phase 3**  
The design is complete. A pre-con will be held once the road is paved.

**Phase 4**  
PNG will begin their work once Duke finishes.

# DRY UTILITY PROGRESS

