

EASTWOOD HOMES

GRIER MEADOWS

SITE PROGRESS – WEEK OF NOVEMBER 18, 2024

Prepared By: Capital Land Partners

WEEK OF NOVEMBER 18 WORK SUMMARY

- In phase 3, curb is being poured on 11/25, and the waterline will be installed once the curb is completed. The following week, stone will go down and the road will be paved. Plateau Drive will be extended at the same time.
- Abernethy will start the work on Mr. Grier's property the first week of December. The surveyor completed the sewer easement survey for the Grier property sewer taps and will be staking the easement on 11/26. We will be sending the agreement for the Griers to execute and will apply for the taps. Their driveways will be poured at the same time as phase 3.
- Duke Energy continued installing their infrastructure cable in phase 4. Spectrum, AT&T, and PNG will install once Duke finishes.



PHASES 2-4 PLAT CHECKLIST



ROADWAY PAVING

Phase 2
Completed

Phase 3
Curb is being poured on 11/25, and the waterline will be installed once the curb is completed. The following week, stone will go down and the road will be paved. Plateau Drive will be extended at the same time.

Phase 4
Completed

UTILITY TESTING

Phase 2
Completed

Phase 3
In progress

Phase 4
Completed

UTILITY AS-BUILTS

Phase	Sewer/Water	Storm
1	Approved	Charlotte is reviewing the storm pipe video.
2	Approved	Charlotte has reviewed the as-builts and are scheduled to complete review of the video by 11/29.
3	In progress	In progress
4	Approved	In progress

UTILITY INSTALLATION PROGRESS

SEWER

Completed

- Phase 1
- Phase 2
- Phase 3
- Phase 4



UTILITY INSTALLATION PROGRESS

WATER

Completed

- Phase 1
- Phase 2
- Phase 4

Remaining

- Phase 3



UTILITY INSTALLATION PROGRESS

STORM

Completed

- Phase 1
- Phase 2
- Phase 3: B5-CB to B2-DI
- Phase 4

Remaining

- Phase 3: B2-DI to B1-DI

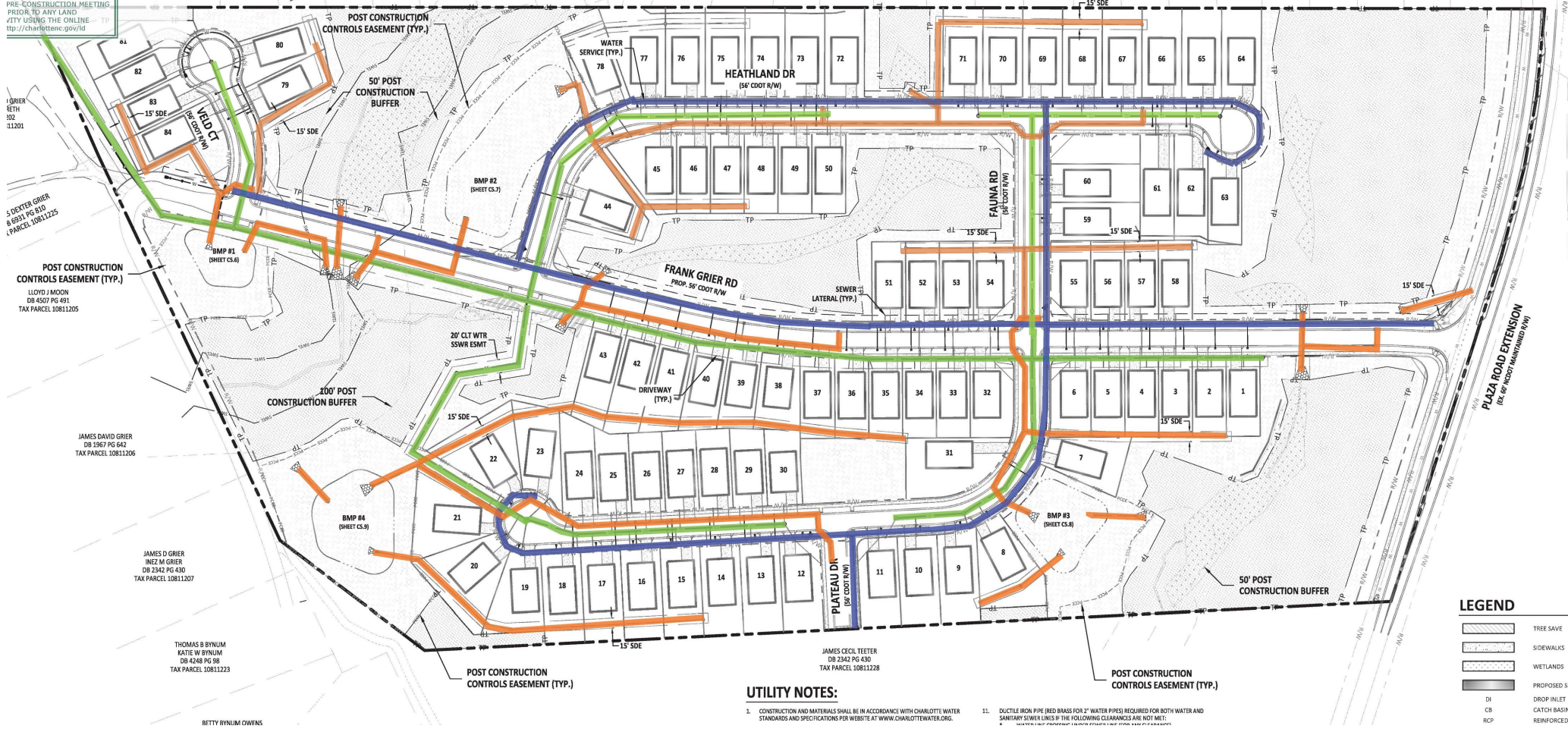


UTILITY PROGRESS

FORESTRY
BRINDA D. JONES
DB 1790 PG 256
TAX PARCEL 10816512

**Henry Curtis
Alfred Ojeda**
MARCUS W. WATTS
DB 1779 PG 251
TAX PARCEL 10816511

PRE-CONSTRUCTION MEETING
PRIOR TO ANY LAND
ACTIVITY USING THE ONLINE
APP: <http://charlottenc.gov/id/>



GRIER RETH
DB 11201

S DEATER GRIER
DB 6931 PG 610
TAX PARCEL 10811225

POST CONSTRUCTION
CONTROLS EASEMENT (TYP.)
LLOYD J MOON
DB 4507 PG 491
TAX PARCEL 10811205

JAMES DAVID GRIER
DB 2567 PG 642
TAX PARCEL 10811206

JAMES D GRIER
INEZ M GRIER
DB 2342 PG 430
TAX PARCEL 10811207

THOMAS B BYNUM
KATE W BYNUM
DB 4246 PG 58
TAX PARCEL 10811223

BETTY BYNUM OWERS

JOHN F ALL
CHARLES A
DB 8223 PG 4
TAX PARCEL 1081

ROBERT RENOLDS
LENNICE C RENOLD
DB 8776 PG 6
TAX PARCEL 1081652

JOHNIE JR OWENS
GAIL JONES
DB 8730 PG 380
TAX PARCEL 1081652

BILL W HAWES
DB 8748 PG 54
TAX PARCEL 1081652

PROGRESS RESIDEN
BOBROWER L
DB 30049 PG 1
TAX PARCEL 1081

DAVID GURMUD
DB 8748 PG 54
TAX PARCEL 1081652

CAMILLE MARTIN
DB 8748 PG 54
TAX PARCEL 1081652

FRANCISCO SAIL CAP
DB 25255 PG
TAX PARCEL 1081

FRANK THUNE
PARRISH WAHLEN
DB 28290 PG 779
TAX PARCEL 1081652

WILLIAM CUEVAS
LESLIA CUEVAS
DB 8748 PG 511
TAX PARCEL 1081652

JOHN T ALEXANDRE
DEBBIE A ALEXANDRE
DB 8847 PG 635
TAX PARCEL 1081652

BRANDY BOWENS
DB 2520 PG 995
TAX PARCEL 1081652

PRISCILLA DANES
DB 18862 PG 929
TAX PARCEL 1081652

GRADY B BOWENS
BROWN W THERSP
DB 8558 PG 386
TAX PARCEL 1081652

MARITHA C SUDAN-CL
DB 8558 PG 386
TAX PARCEL 1081652

GLADY HUBNE
DB 8915 PG 878
TAX PARCEL 1081652

ADELA B LEVI
DB 31118 PG 423
TAX PARCEL 10816524

UTILITY NOTES:

- CONSTRUCTION AND MATERIALS SHALL BE IN ACCORDANCE WITH CHARLOTTE'S WATER STANDARDS AND SPECIFICATIONS PER WEBSITE AT WWW.CHARLOTTEWATER.ORG.
- DUCTILE IRON PIPE (RED BRASS FOR 2" WATER PIPES) REQUIRED FOR BOTH WATER AND SANITARY SEWER LINES IF THE FOLLOWING CLEARANCES ARE NOT MET:
 - 1.5' TO SIDEWALKS
 - 1.5' TO DRIVEWAYS
 - 1.5' TO EXISTING UTILITY LINES
 - 1.5' TO EXISTING FOUNDATIONS
 - 1.5' TO EXISTING FOUNDATIONS
 - 1.5' TO EXISTING FOUNDATIONS

LEGEND

- TREE SAVE
- SIDEWALKS
- WETLANDS
- PROPOSED SEW
- DROP-INLET
- CATCH BASIN
- REINFORCED CC

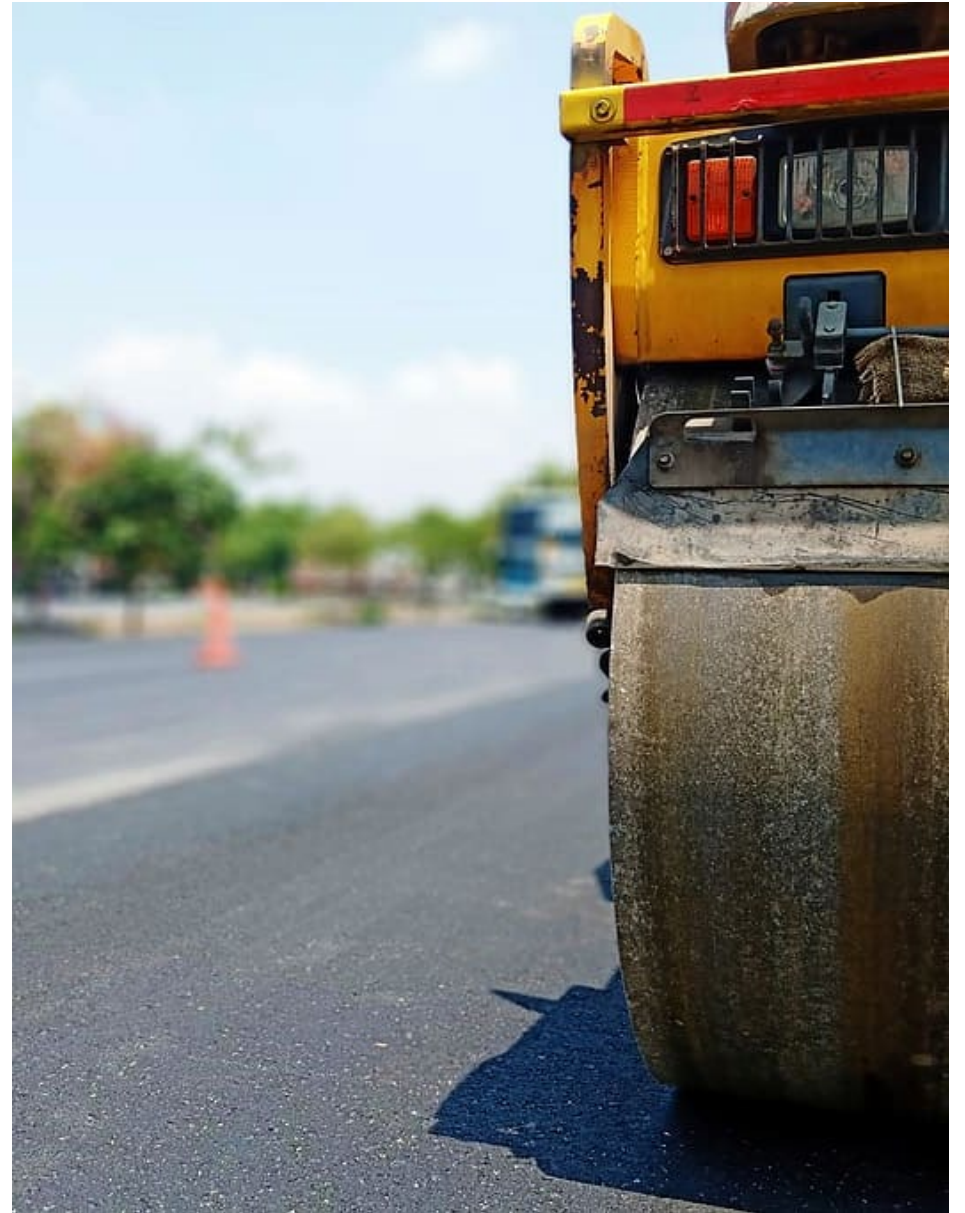
ROADWAY PROGRESS

Phase 1

- **Completed:** All
- **Remaining:** Final Lift

Phases 2-4

- **Completed:** Phase 2 and 4
- **Remaining:** Phase 2 and 4 final lift. Curb and paving in phase 3.
 - Phases 2 and 4 are paved. In phase 3, curb is being poured on 11/25, and the waterline will be installed once the curb is completed. The following week, stone will go down and the road will be paved. Plateau Drive will be extended at the same time.



DRY UTILITY PROGRESS

DUKE ENERGY

Phase 1
Complete

Phase 2
Complete

Phase 3
The design is complete. A pre-con will be held once the road is paved.

Phase 4
Duke is currently installing in phase 4.

SPECTRUM

Phase 1
Complete

Phase 2
Complete

Phase 3
The design is complete. A pre-con will be held once the road is paved.

Phase 4
Spectrum will begin their work once Duke finishes.

AT&T

Phase 1
Complete

Phase 2
Complete

Phase 3
The design is complete. A pre-con will be held once the road is paved.

Phase 4
AT&T will begin their work once Duke finishes.

PNG

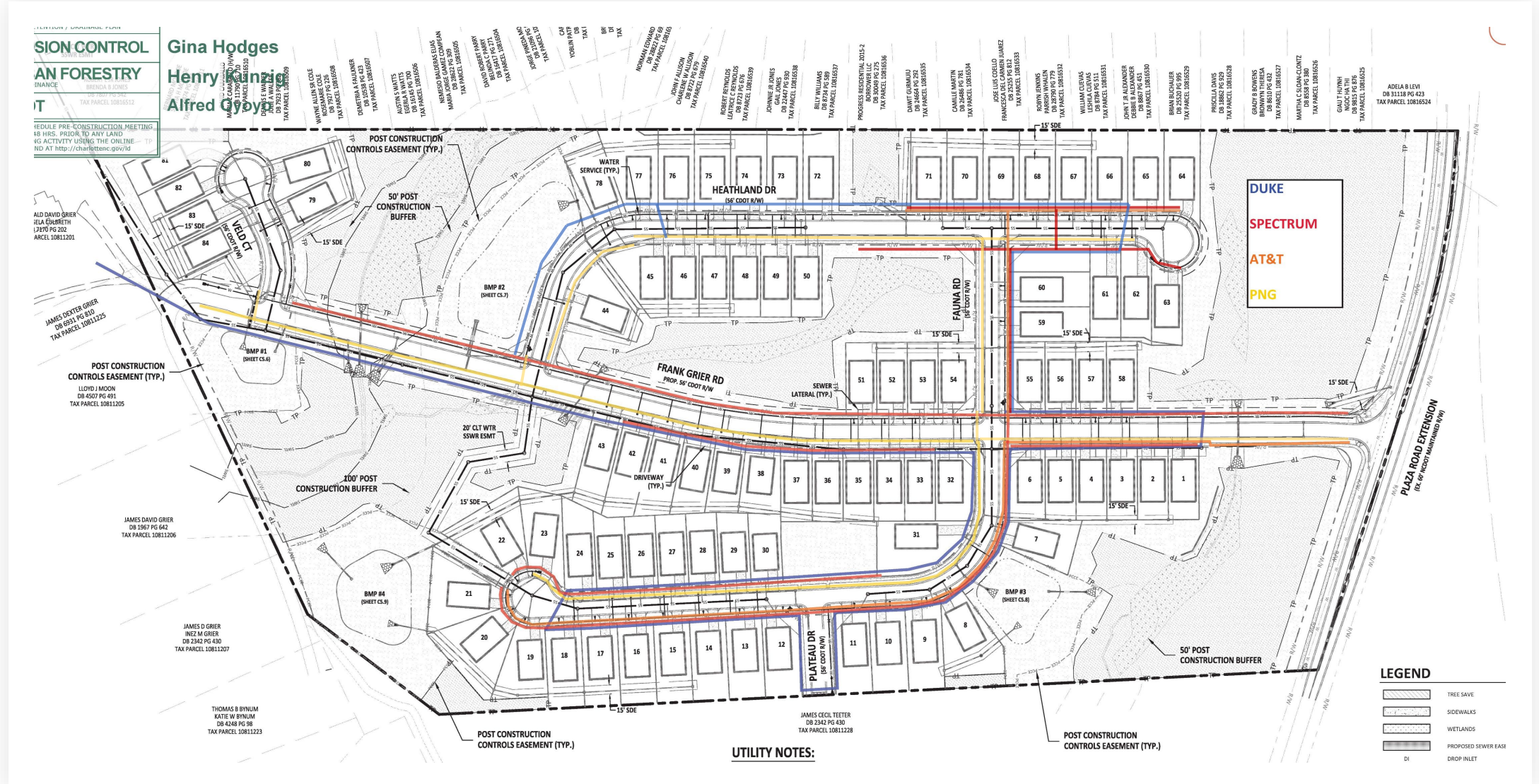
Phase 1
Complete

Phase 2
Complete

Phase 3
The design is complete. A pre-con will be held once the road is paved.

Phase 4
PNG will begin their work once Duke finishes.

DRY UTILITY PROGRESS



CONSTRUCTION CONTROL
AN FORESTRY
IT

BRANDON B. JONES
 TAX PARCEL 10815512

SCHEDULE PRE-CONSTRUCTION MEETING:
 18 HRS. PRIOR TO ANY LAND
 USE ACTIVITY USING THE ONLINE
 REGISTRATION SYSTEM AT
<http://charlotteenc.gov/ld>

Gina Hodges
Henry Kinn
Alfred Goy

WYNNE ALLEN S. COLE
 DB 8521 PG 423
 TAX PARCEL 10815508

CONETRA R. PALMER
 DB 8521 PG 423
 TAX PARCEL 10815507

ADRIAN A. WATTS
 DB 10145 PG 505
 TAX PARCEL 10815506

NANESSO BALDERRAS VELAZQUEZ
 DB 8521 PG 423
 TAX PARCEL 10815505

MARIA LOPEZ PG 300
 DB 8521 PG 423
 TAX PARCEL 10815504

DAVID ROBERT LASKY
 DB 8521 PG 423
 TAX PARCEL 10815503

DAVID ROBERT LASKY
 DB 8521 PG 423
 TAX PARCEL 10815502

SPENCE ANDERSON
 DB 8521 PG 423
 TAX PARCEL 10815501

CHRIS
 YOUNG PATR
 TAXI
 DB
 PG
 TAX

MONYAN OSMUND
 DB 8521 PG 423
 TAX PARCEL 10815499

DAVID K. ALLEN
 CHARLES W. ALLEN
 DB 8521 PG 423
 TAX PARCEL 10815498

ROBERT PERINOLIS
 LEATRICE C. PERINOLIS
 DB 8521 PG 423
 TAX PARCEL 10815497

JOHNNIE B. JONES
 DB 22447 PG 360
 TAX PARCEL 10815496

GAIL JONES
 DB 22447 PG 360
 TAX PARCEL 10815495

BRUCE WILLIAMS
 DB 8521 PG 423
 TAX PARCEL 10815494

PROCESSES RESIDENTIAL 2015-2
 ADORROWELL LLC
 DB 80009 PG 275
 TAX PARCEL 10815493

DAVIDT GUNAWIDU
 TAX PARCEL 10815492

CAMILLE MARYN
 TAX PARCEL 10815491

JOSE LUKE COLLADO
 FRANCISCA DEL CARMEN JIMENEZ
 DB 25205 PG 875
 TAX PARCEL 10815490

ROBYN JENNINS
 TAX PARCEL 10815489

PARRISH WYALDEN
 TAX PARCEL 10815488

WILLIAM CUEVAS
 LESLIE A. CUEVAS
 DB 8521 PG 423
 TAX PARCEL 10815487

JOHN L. ALEXANDER
 DEBORAH L. ALEXANDER
 DB 8867 PG 451
 TAX PARCEL 10815486

BRANDI RICHAUER
 TAX PARCEL 10815485

FRANCOLO DAVIS
 TAX PARCEL 10815484

GRADY B. BOWENS
 BROWN W. THERESA
 DB 8521 PG 423
 TAX PARCEL 10815483

MARTHA C. SLOAN-CLOWITZ
 DB 8521 PG 423
 TAX PARCEL 10815482

GAUT THORNH
 DB 8521 PG 423
 TAX PARCEL 10815481

ADELA B. LEVI
 DB 11113 PG 423
 TAX PARCEL 10815480

ALD DAVID GRIER
 JELA COBRETH
 12175 PG 202
 TAX PARCEL 10811201

JAMES DEXTER GRIER
 DB 6521 PG 816
 TAX PARCEL 10811225

POST CONSTRUCTION CONTROLS EASEMENT (TYP.)
 LLOYD J. MOON
 DB 4507 PG 491
 TAX PARCEL 10811205

JAMES DAVID GRIER
 DB 1367 PG 642
 TAX PARCEL 10811206

JAMES D. GRIER
 INEZ M. GRIER
 DB 2342 PG 430
 TAX PARCEL 10811207

THOMAS B. BYNUM
 KATIE W. BYNUM
 DB 4248 PG 58
 TAX PARCEL 10811223

JAMES CECIL TEETER
 DB 2342 PG 430
 TAX PARCEL 10811228

POST CONSTRUCTION CONTROLS EASEMENT (TYP.)