

EASTWOOD HOMES



GRIER MEADOWS

SITE PROGRESS – WEEK OF NOVEMBER 11, 2024

Prepared By: Capital Land Partners

WEEK OF NOVEMBER 11 WORK SUMMARY

- In phase 3, curb is expected to be poured on 11/20, weather dependent. The waterline will be installed after curb, and the stone will go down the week of 11/25. Paving will occur the following week, and Plateau Drive will be extended at the same time.
- Abernethy will start the work on Mr. Grier's property the first week of December. The surveyor is working on the sewer easement survey for the Grier property sewer taps – this will be completed by 11/25. Once the survey is completed, the Griers can execute the easement agreement, and we will apply for the taps. Their driveways will be poured at the same time as phase 3.
- Duke Energy continued installing their infrastructure cable in phase 4. Spectrum, AT&T, and PNG will install once Duke finishes.
- Landscaping maintenance responsibility was transferred to the HOA management company.



PHASES 2-4 PLAT CHECKLIST



ROADWAY PAVING

Phase 2
Completed

Phase 3
Curb is expected to be poured on 11/20, weather dependent. The waterline will be installed after curb, and the stone will go down the week of 11/25. Paving will occur the following week, and Plateau Drive will be extended at the same time.

Phase 4
Completed

UTILITY TESTING

Phase 2
Completed

Phase 3
In progress

Phase 4
Completed

UTILITY AS-BUILTS

Phase	Sewer/Water	Storm
1	Approved	We are waiting on approval from Charlotte Water – comments are due by 11/20. Charlotte will review the phase 1 storm pipe video once the as-built is approved.
2	Approved	Charlotte has reviewed the as-builts and are scheduled to complete review of the video by 11/29.
3	In progress	In progress
4	Approved	In progress

UTILITY INSTALLATION PROGRESS

SEWER

Completed

- Phase 1
- Phase 2
- Phase 3
- Phase 4



UTILITY INSTALLATION PROGRESS

WATER

Completed

- Phase 1
- Phase 2
- Phase 4

Remaining

- Phase 3



UTILITY INSTALLATION PROGRESS

STORM

Completed

- Phase 1
- Phase 2
- Phase 3: B5-CB to B2-DI
- Phase 4

Remaining

- Phase 3: B2-DI to B1-DI



UTILITY PROGRESS

FORESTRY
BRINDA D. JONES
DB 1700 PG 218
TAX PARCEL 10816512

**Henry Curtis
Alfred Ojeda**
MARCUS W. WATTS
DB 1779 PG 211
TAX PARCEL 10816511

WAYNE ALLEN SEALE
ROSEMARY PG 225
TAX PARCEL 10816508

DEMETRIA M. ALAKE
DB 1745 PG 42
TAX PARCEL 10816501

MICHAEL WATTS
AGUIA R. WATTS
DB 1845 PG 105
TAX PARCEL 10816505

WESLEO BALU
TAMARA DORGE EP
DB 1845 PG 105
TAX PARCEL 10816505

DAVID F. BELLI
DB 1845 PG 105
TAX PARCEL 10816505

JOHN F. ALL
CHARLES A. A
DB 1822 PG 4
TAX PARCEL 10816501

ROBERT RENOLDS
LEONICE C. RENOLD
DB 1876 PG 8
TAX PARCEL 10816502

JOHNNIE JR. JONES
GAIL JONES
DB 1876 PG 8
TAX PARCEL 10816502

BILL W. HANES
DB 1876 PG 8
TAX PARCEL 10816502

PROGRESS RESIDENT
BOBROWER L.
DB 3004 PG 1
TAX PARCEL 10816501

DAVID GURMUDU
DB 3004 PG 1
TAX PARCEL 10816501

CAMILLE MARTIN
DB 3004 PG 1
TAX PARCEL 10816501

FRANCISCO S. DEL CARMO
DB 2525 PG
TAX PARCEL 10816501

FRANK CHANE
PABRIN WALKER
DB 2820 PG 79
TAX PARCEL 10816501

WILLIAM CUEVAS
LESHIA CUEVAS
DB 8748 PG 511
TAX PARCEL 10816501

JOHN T. ALEXANDER
DEBBIE A. ALEXANDER
DB 8847 PG 630
TAX PARCEL 10816501

IRIS M. BUSCHER
DB 2520 PG 995
TAX PARCEL 10816502

PRISCILLA DANES
DB 1862 PG 929
TAX PARCEL 10816502

GRADY B. BOWENS
BROWN W. THOMPSON
DB 8558 PG 386
TAX PARCEL 10816502

MARITHA C. SUDANCI
DB 8558 PG 386
TAX PARCEL 10816502

GLADY H. HUNNE
DB 8558 PG 386
TAX PARCEL 10816502

ADELA B. LEVI
DB 3118 PG 423
TAX PARCEL 10816524

PRE-CONSTRUCTION MEETING
PRIOR TO ANY LAND
ACTIVITY USING THE ONLINE
APP: <http://charlottenc.gov/id/>

GRIER RETH
DB 11201
TAX PARCEL 10811201

S. DEATY GRIER
DB 6931 PG 610
TAX PARCEL 10811225

POST CONSTRUCTION
CONTROLS EASEMENT (TYP.)
LLOYD J. MOON
DB 4507 PG 491
TAX PARCEL 10811205

JAMES DAVID GRIER
DB 2567 PG 642
TAX PARCEL 10811206

JAMES D. GRIER
INEZ M. GRIER
DB 2342 PG 430
TAX PARCEL 10811207

THOMAS B. BYNUM
KATE W. BYNUM
DB 4246 PG 98
TAX PARCEL 10811223

BETTY BYNUM OWERS



LEGEND

	TREE SAVE
	SIDEWALKS
	WETLANDS
	PROPOSED SEW
	DROP INLET
	CATCH BASIN
	REINFORCED CC

UTILITY NOTES:

- CONSTRUCTION AND MATERIALS SHALL BE IN ACCORDANCE WITH CHARLOTTE'S WATER STANDARDS AND SPECIFICATIONS PER WEBSITE AT WWW.CHARLOTTEWATER.ORG.
- DUCTILE IRON PIPE (RED BRASS FOR 2" WATER PIPES) REQUIRED FOR BOTH WATER AND SANITARY SEWER LINES IF THE FOLLOWING CLEARANCES ARE NOT MET:
 a. WWW.CHARLOTTEWATER.ORG

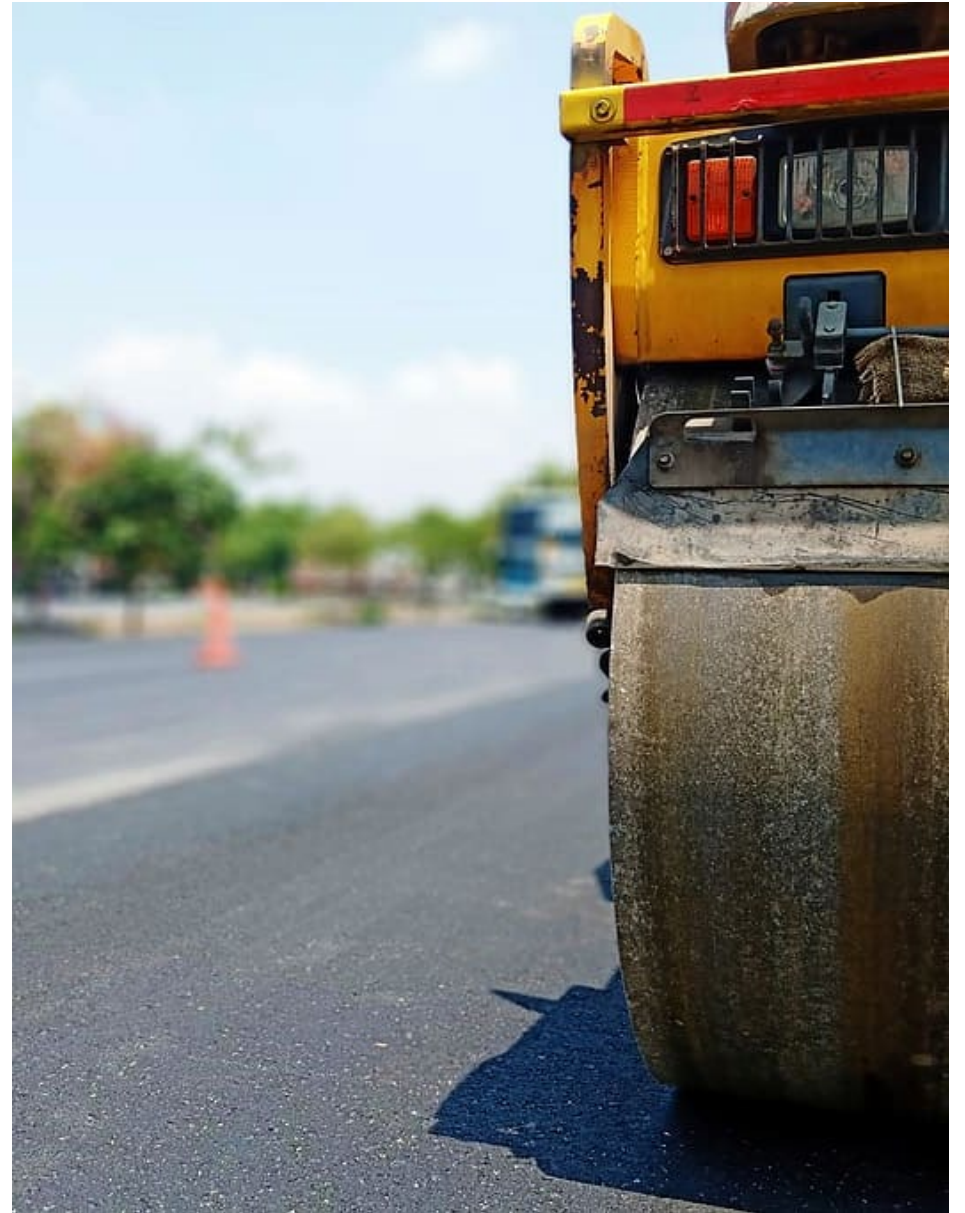
ROADWAY PROGRESS

Phase 1

- **Completed:** All
- **Remaining:** Final Lift

Phases 2-4

- **Completed:** Phase 2 and 4
- **Remaining:** Phase 2 and 4 final lift. Curb and paving in phase 3.
 - Phases 2 and 4 are paved. In phase 3, curb is expected to be poured on 11/20, weather dependent. The waterline will be installed after curb, and the stone will go down the week of 11/25. Paving will occur the following week, and Plateau Drive will be extended at the same time.



DRY UTILITY PROGRESS

DUKE ENERGY

Phase 1
Complete

Phase 2
Complete

Phase 3
The design is complete. A pre-con will be held once the road is paved.

Phase 4
Duke is currently installing in phase 4.

SPECTRUM

Phase 1
Complete

Phase 2
Complete

Phase 3
The design is complete. A pre-con will be held once the road is paved.

Phase 4
Spectrum will begin their work once Duke finishes.

AT&T

Phase 1
Complete

Phase 2
Complete

Phase 3
The design is complete. A pre-con will be held once the road is paved.

Phase 4
AT&T will begin their work once Duke finishes.

PNG

Phase 1
Complete

Phase 2
Complete

Phase 3
The design is complete. A pre-con will be held once the road is paved.

Phase 4
PNG will begin their work once Duke finishes.

