

EASTWOOD HOMES



# **GRIER MEADOWS**

**SITE PROGRESS – WEEK OF JANUARY 6, 2025**

Prepared By: Capital Land Partners

# WEEK OF JANUARY 6 WORK SUMMARY

---

- Abernethy has scheduled concrete for phase 2 and will install once temperatures are suitable. They will also add the handicap ramp to the mailboxes and repair the two sections of damaged curb. Common space landscaping will be completed after the sidewalk is installed. They will start the work on Mr. Grier's property in the next couple of weeks. We will apply for their sewer taps the week of 1/13.
- Abernethy hammered the rock in the building pads and in the Duke Energy trench. Duke Energy is expected to return to complete phase 4 the week of 1/13.
- A pre-con for dry utilities was held on 1/9 and the start date for Duke is 2/6.
- The erosion control inspector gave us approval to close BMP 4 in phase 1, and we have requested pricing from Abernethy to convert it. We will be reaching out to the inspector the week of 1/13 to schedule a punchout for phase 1.
- Erosion control items are on the schedule to be addressed the week of 1/13.
- Protection was added to meter boxes in phase 3 and conduit crossing were marked on the curb. Street-lights for phase 3 were also marked. Abernethy will be stabilizing phase 3 lots and removing equipment/debris soon.



# PHASES 2-4 PLAT CHECKLIST



## ROADWAY PAVING

**Phase 2**  
Completed

**Phase 3**  
Completed

**Phase 4**  
Completed

## UTILITY TESTING

**Phase 2**  
Completed

**Phase 3**  
Scheduled for late January

**Phase 4**  
Completed

## UTILITY AS-BUILTS

Phase	Sewer/Water	Storm
1	Approved	Abernethy is addressing required repairs.
2	Approved	Charlotte is reviewing the video.
3	Completed and will be submitted soon	In progress
4	Approved	Under review. Comments are due by 1/21.

# UTILITY INSTALLATION PROGRESS

## SEWER

---

### Completed

- Phase 1
- Phase 2
- Phase 3
- Phase 4





# UTILITY INSTALLATION PROGRESS

## WATER

---

### Completed

- Phase 1
- Phase 2
- Phase 3
- Phase 4



# UTILITY INSTALLATION PROGRESS

## STORM

---

### Completed

- Phase 1
- Phase 2
- Phase 3
- Phase 4





# UTILITY PROGRESS

**FORESTRY**  
BRINDA D. JONES  
DB 1700 PG 218  
TAX PARCEL 10816512

**Henry Grier  
Alfred Grier**  
MARCUS W. GRIER  
DB 1779 PG 211  
TAX PARCEL 10816511

PRE-CONSTRUCTION MEETING  
PRIOR TO ANY LAND  
ACTY USING THE ONLINE  
TP <http://charlottenc.gov/id/>



**LEGEND**

	TREE SAVE
	SIDEWALKS
	WETLANDS
	PROPOSED SEW
	DROP INLET
	CATCH BASIN
	REINFORCED CC

**UTILITY NOTES:**

- CONSTRUCTION AND MATERIALS SHALL BE IN ACCORDANCE WITH CHARLOTTE'S WATER STANDARDS AND SPECIFICATIONS PER WEBSITE AT [WWW.CHARLOTTEWATER.ORG](http://WWW.CHARLOTTEWATER.ORG).
- DUCTILE IRON PIPE (RED BRASS FOR 2" WATER PIPES) REQUIRED FOR BOTH WATER AND SANITARY SEWER LINES IF THE FOLLOWING CLEARANCES ARE NOT MET:

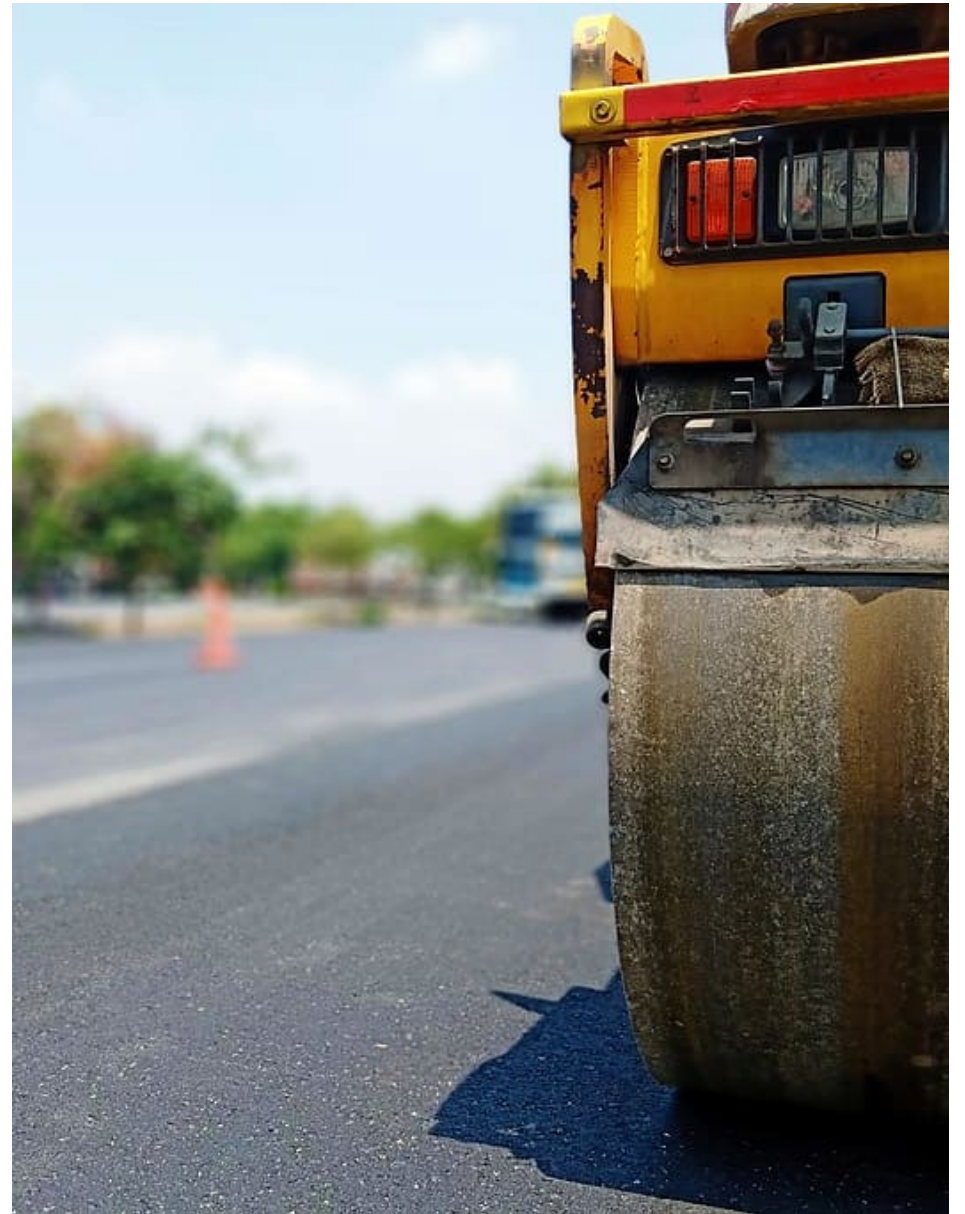
BETTY BYNUM OWENS

# ROADWAY PROGRESS

## Completed:

- Phase 1
- Phase 2
- Phase 3
- Phase 4

**Remaining:** Final Lifts





# DRY UTILITY PROGRESS

## DUKE ENERGY

---

**Phase 1**  
Complete

**Phase 2**  
Complete

**Phase 3**  
2/6 start date.

**Phase 4**  
Duke is currently installing in phase 4.

## SPECTRUM

---

**Phase 1**  
Complete

**Phase 2**  
Complete

**Phase 3**  
Spectrum will install after Duke.

**Phase 4**  
Complete

## AT&T

---

**Phase 1**  
Complete

**Phase 2**  
Complete

**Phase 3**  
AT&T will install after Duke.

**Phase 4**  
AT&T will begin their work once Duke finishes.

## PNG

---

**Phase 1**  
Complete

**Phase 2**  
Complete

**Phase 3**  
PNG will install after Duke.

**Phase 4**  
Complete

