

EASTWOOD HOMES



GRIER MEADOWS

SITE PROGRESS – WEEK OF JANUARY 13, 2025

Prepared By: Capital Land Partners

WEEK OF JANUARY 13 WORK SUMMARY

- The sidewalk was poured in phase 2 and 4 and will be backfilled the week of 1/20. Once Abernethy completes this, Southern Shade Tree will sod the planting strips and install street trees in phase 2 and along Frank Grier Rd. Once trees are installed along Frank Grier Rd, we will schedule the phase 1 punchout.
- Abernethy submitted the outstanding as-built/video information for phase 1 to Charlotte Water.
- Abernethy completed prep work for Duke Energy's install in phases 3 and completion of phase 4.
- The sewer easement for the Grier's was recorded, and service applications will be submitted to Charlotte Water soon. The remaining work for the Grier's will be scheduled after sidewalk backfilling.
- Several erosion control items are scheduled to be addressed the week of 1/20.



PHASES 2-4 PLAT CHECKLIST



ROADWAY PAVING

Phase 2
Completed

Phase 3
Completed

Phase 4
Completed

UTILITY TESTING

Phase 2
Completed

Phase 3
Scheduled for late January

Phase 4
Completed

UTILITY AS-BUILTS

Phase	Sewer/Water	Storm
1	Approved	Under Review. Abernethy submitted the outstanding as-built/video information for phase 1 to Charlotte Water.
2	Approved	Under review
3	Completed and will be submitted soon	In progress
4	Approved	Under review. Comments are due by 1/21.

UTILITY INSTALLATION PROGRESS

SEWER

Completed

- Phase 1
- Phase 2
- Phase 3
- Phase 4



UTILITY INSTALLATION PROGRESS

WATER

Completed

- Phase 1
- Phase 2
- Phase 3
- Phase 4



UTILITY INSTALLATION PROGRESS

STORM

Completed

- Phase 1
- Phase 2
- Phase 3
- Phase 4



UTILITY PROGRESS

FORESTRY
BRINDA D. JONES
DB 1790 PG 218
TAX PARCEL 10816512

**Henry Grier
Alfred Grier**
MARCUS W. WATTS
DB 1779 PG 211
TAX PARCEL 10816511

PRE-CONSTRUCTION MEETING
PRIOR TO ANY LAND
ACTIVITY USING THE ONLINE
APP: <http://charlottenc.gov/id/>



GRIER RETH
DB 11201

POST CONSTRUCTION
CONTROLS EASEMENT (TYP.)
LLOYD J. MOON
DB 4507 PG 491
TAX PARCEL 10811205

JAMES DAVID GRIER
DB 2567 PG 642
TAX PARCEL 10811206

JAMES D GRIER
INEZ M GRIER
DB 2342 PG 430
TAX PARCEL 10811207

THOMAS B BYNUM
KATE W BYNUM
DB 4246 PG 58
TAX PARCEL 10811223

BETTY BYNUM OWENS

WAYNE ALLEN SEALE
ROSEMARY PG 225
TAX PARCEL 10816508

DEMETRIA M. ALKALAK
DB 1779 PG 211
TAX PARCEL 10816507

ANTHONY WATTS
AGUIA R WATTS
DB 1845 PG 54
TAX PARCEL 10816505

UNIVERSO BALU
TAMARA DORGE EP
DB 1779 PG 211
TAX PARCEL 10816504

DAVID F
BELU
DB
TAX PARCEL 10816503

JOHN F. ALL
CHARLES A. A
DB 822 PG 4
TAX PARCEL 10816502

ROBERT RENOLDS
LEONICE C. RENOLD
DB 876 PG 6
TAX PARCEL 10816501

JOHNNIE JR. OWENS
GAIL JONES
DB 1779 PG 211
TAX PARCEL 10816500

BILL W. WATTS
DB 874 PG 5
TAX PARCEL 10816499

PROGRESS RESIDENT
BOBROWER L
DB 3004 PG 1
TAX PARCEL 10816498

DAVID GURBAUD
LISA M. GURBAUD
DB 1779 PG 211
TAX PARCEL 10816497

CAMILLE MARTIN
DUSTY MARTIN
DB 1779 PG 211
TAX PARCEL 10816496

JOSEPH L. LEE
FRANCISCO S. LEE
DB 2525 PG
TAX PARCEL 10816495

KEVIN CHANE
PARRISH WAHLEN
DB 2829 PG 79
TAX PARCEL 10816494

WILLIAM CUEVAS
LESLIA CUEVAS
DB 874 PG 5
TAX PARCEL 10816493

JOHN T. ALEXANDER
DEBBIE B. ALEXANDER
DB 8847 PG 45
TAX PARCEL 10816492

IRIS ANN BUSCHAKES
DB 2520 PG 98
TAX PARCEL 10816491

PRISCILLA DANES
DB 1862 PG 929
TAX PARCEL 10816490

GRADY B. BOWENS
BROWN W. THOMPSON
DB 1858 PG 38
TAX PARCEL 10816489

MARITHA C. SUDANCI
DB 8558 PG 38
TAX PARCEL 10816488

GLADY H. HUNN
DB 8515 PG 87
TAX PARCEL 10816487

ADELA B. LEVI
DB 3118 PG 423
TAX PARCEL 10816524

UTILITY NOTES:

- CONSTRUCTION AND MATERIALS SHALL BE IN ACCORDANCE WITH CHARLOTTE'S WATER STANDARDS AND SPECIFICATIONS PER WEBSITE AT WWW.CHARLOTTEWATER.ORG.
- DUCTILE IRON PIPE (RED BRASS FOR 2" WATER PIPES) REQUIRED FOR BOTH WATER AND SANITARY SEWER LINES IF THE FOLLOWING CLEARANCES ARE NOT MET:
 - 1.5' TO 2.0' TO EXISTING UTILITIES
 - 1.5' TO 2.0' TO EXISTING FOUNDATIONS
 - 1.5' TO 2.0' TO EXISTING STRUCTURES

LEGEND

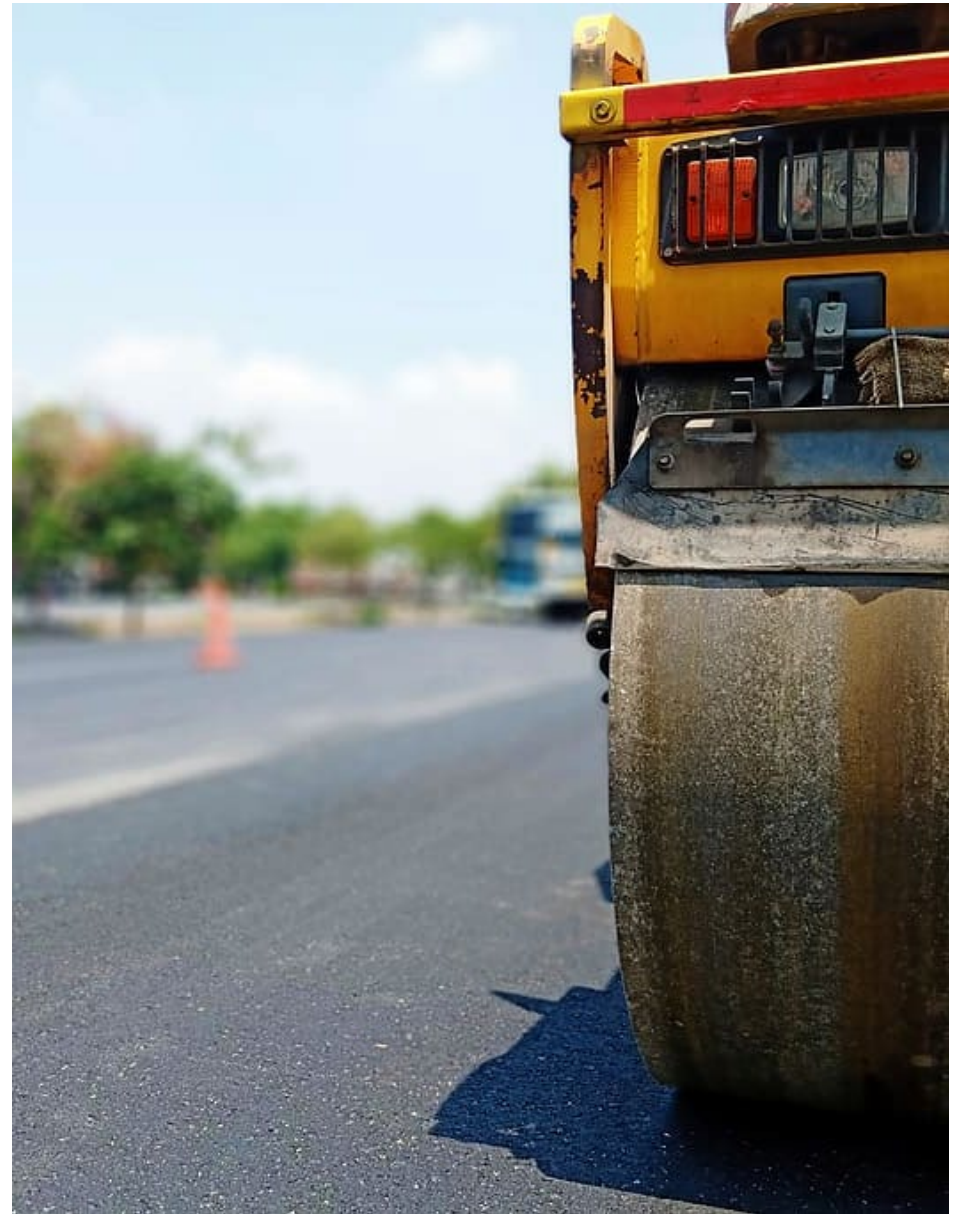
- TREE SAVE
- SIDEWALKS
- WETLANDS
- PROPOSED SEW
- DROP-INLET
- CATCH BASIN
- REINFORCED CC

ROADWAY PROGRESS

Completed:

- Phase 1
- Phase 2
- Phase 3
- Phase 4

Remaining: Final Lifts



DRY UTILITY PROGRESS

DUKE ENERGY

Phase 1
Complete

Phase 2
Complete

Phase 3
2/6 start date.

Phase 4
Duke is currently installing in phase 4.

SPECTRUM

Phase 1
Complete

Phase 2
Complete

Phase 3
Spectrum will install after Duke.

Phase 4
Complete

AT&T

Phase 1
Complete

Phase 2
Complete

Phase 3
AT&T will install after Duke.

Phase 4
AT&T will begin their work once Duke finishes.

PNG

Phase 1
Complete

Phase 2
Complete

Phase 3
PNG will install after Duke.

Phase 4
Complete

